

SHARDEIN SCHOOL
UNIT-I EXAMINATION (2025-26)
CLASS – XII
SUBJECT : ENGLISH

TIME : 03 HOURS

MM : 80

SECTION – A : READING

A1- Read the passage carefully and answer the questions.

1. In a room filled with people, each face illuminated by the soft glow of their smartphones, moments drift away like autumn leaves in the wind. The constant hum of notifications fills the air punctuating conversations like an incessant drumbeat. Every vibration or ping sends fingers flying to screens, a response ingrained by years of digital conditioning. The once-reliable tick-tock of analog timepieces has been overshadowed by the constant flicker of notifications on the wrist watch, blurring the boundaries between the virtual and the real.
2. Anxiety gnaws at the edges of consciousness when the phone is out of reach, a phantom limb syndrome that leaves us feeling incomplete without our digital appendage. The fear of missing out permeates every moment spent away from the screen, driving us to constantly check for updates and notifications.
3. Thumbs move with the speed and precision of skilful pianists, tapping out messages and scrolling through feeds with practiced ease. Yet amidst the flurry of activity, the true rhythm of life remains unheard, drowned out by the dissonance of digital noise. The weight of constant connectivity forms a hunch upon our shoulders, a physical manifestation of the burden we carry in an age of information overload. Our minds are perpetually on high alert, scanning for the next wave of excitement that comes with each like, share, or comment.
4. And yet, for all our efforts to stay connected, we find ourselves increasingly isolated in a sea of digital faces. Genuine connections are fleeting, drowned out by the constant clamour for attention. In the pursuit of digital validation, we sacrifice the wealth of lived experience, trading meaningful moments for fleeting glimpses of connection. The true essence of life lies not in the pixels on a screen, but in the depth of human connection and the richness of shared experiences.
5. As we navigate this brave new world of constant connectivity, let us not forget the value of presence and the beauty of being fully engaged in the moments that matter most. For in the end, it is not the number of likes or followers that defines us, but the depth of our connections and the richness of our experiences that truly matter.

A1.1. Answer the following questions, based on the passage above:

- a) According to paragraph 1. what effect do smartphone notifications have on the people in the room?
- b) How does the author use the metaphor of 'autumn leaves in the wind' to interpret the passing of time in the setting described?

c) Read and complete the following sentence suitably.

The phrase 'a phantom limb syndrome that leaves us feeling incomplete without our digital appendage suggests that just as an amputee might feel pain in a limb they no longer have, individuals can feel a sense of loss or incompleteness when they are separated from their digital devices.

Choose the correct response from the two options to complete the sentence. The concern this analogy points towards is about

- i) a deep (psychological) dependence on technology for a sense of wholeness or connection
 - ii) excessive physical damage that can be caused due to constant use of digital devices
- d) Complete the following suitably with ONE advantage, with reference to paragraph 2. Designating specific hours each day to intentionally avoid checking digital devices can help
- e) Why does the writer refer to digital noise as 'dissonance' in paragraph 3? Because
- i) it creates a jarring and chaotic environment that disrupts focus.
 - ii) it contributes to a sense of overload, overwhelming the senses.
 - iii) it interferes with our ability to engage with meaningful aspects of our life.
 - iv) it induces stress by interrupting with regular updates about the device.
- f) Provide ONE textual evidence with reference to paragraph 3, to prove the following. The need to be perpetually engaged with digital notifications manifests in the body.
- g) In the line, "Yet amidst the flurry of activity, the true rhythm of life remains unheard... what does the phrase true rhythm of life refer to? (Paragraphs 3-4)
- h) Complete the analogy with ONE word from paragraph 4.
whisper : quietly : loudly : : _____ : loudly
- i) validation
 - ii) fleeting
 - iii) essence
 - iv) clamour
- i) Why is it fair to say that the statement "And yet, for all our efforts to stay connected, we find ourselves increasingly isolated in a sea of digital faces from paragraph 4, employs irony?
- i) Despite the intent to connect more effectively, the result is the opposite.
 - ii) The writer mocks the seriousness with which people approach digital connectivity.

- iii) The writer exaggerates the effects of digital connectivity to highlight its impact.
- iv) Use of 'a sen of digital faces to symbolically represent digital platforms.
- j) Assess the potential challenges or benefits of relying on survey outcomes for designing health interventions, as outlined in paragraph 5.

A2- Read the passage given below.

1. We're all familiar with the usual reasons workers cite for wanting to stay away even after lockdowns have long ended flexible schedules, not having to commute, and of course, increased productivity, However, productivity isn't the only reason people want to stay away from the office We recently surveyed 1,000 remote workers to find out what's really keeping them tied to their work from home lives.
2. The findings include: 72% want to be able to take a nap or exercise during the day. Nearly three out of four remote workers surveyed stated that the ability to take a nap or workout during the workday was one of the reasons they wanted to stay home. Though these activities may very well increase worker productivity, there's no doubt that a nap on the kitchen couch would be frowned upon in the office.
3. 73% want to be able to watch TV while they work. Three out of four respondents again say that being able to entertain themselves with TV, podcasts, music or other media is one of the reasons they want to keep their work from home lifestyle.
4. 62% cite concerns about their appearance. Well over half or respondents stated that they are concerned about their co-workers seeing them in person again after such a long time apart, Whether it's weight loss or gain, not having the right clothes or another concern about appearance, most would rather not have to worry about the way they look to their co-workers outside a Zoom call.
5. When asked to choose the reason that most affects their desire to keep working from home, predictable answers like caring for children and lack of a commute were still the most common number reasons. 14% of respondents stated that working remotely was so important to them, that they would not go back to work in person even if their employers required it,

A2.1- Answer the following questions, based on the given passage:

- 1) these activities will increase productivity'. By 'Productivity', the author refers to
 - a) Products Produced
 - b) Efficiency of the employee
 - c) Time spent by the employee
 - d) Number of activities.

- 2) What change in the work place would bring those people back to office who want
 - a) Giving long breaks
 - b) Free coffee and tea
 - c) Building entertainment lounge
 - d) Spacious conference hall
- 3) As per the survey, why do health conscious people prefer to work from home?
- 4) Complete the following sentence appropriately.
The passage ends on a note that some people are resolved to _____.
- 5) Explain one inference that can be drawn from para 1 about the reason for people's preference to work from home.
- 6) State whether the statement given below is True or False. The survey reveals that people deeply miss socialising in the work from home style.
- 7) Explain in your own words how appearance is one of the factors for people's preference for work from home.
- 8) As per the survey, what top priorities of people prevent them from going to office.

SECTION – B : CREATIVE WRITING SKILLS

- B1. Your school is planning to conduct an inter-class seminar on the topic "The Importance of mental health' to create awareness in adolescents. As the head of organising committee, write a notice to inform all the students about the seminar and invite registrations from classes XI-XII. Include other necessary details. Put the notice in a box. (4)
- B2. You have bought a new house in Meerut. Write an informal letter of invitation inviting your friends and relatives to the house warming ceremony. Mention day, date, time and venue. As Rajesh Sharma draft an invitation in about 50 words. (4)
- B3. Financial literacy is increasingly recognised as a crucial 21st-century skill for young individuals. Write a letter to the editor of a local daily discussing the benefits of providing financial literacy education to children. Also, suggest effective ways to raise awareness about the importance of this education among parents and guardians. You may use some of the given cues along with your own ideas to draft the letter. You are a counsellor, Chitra Mahapatra from Puri, Odisha. (5)
- B4. In an era of rapid globalisation and technological advancement, the preservation of cultural heritage remains a vital challenge, particularly for the youth. India continues to navigate the complexities of maintaining tradition alongside modernity. Write an article exploring the role of cultural heritage in shaping the identities of today's Indian youth. Provide examples to illustrate your points wherever necessary. You may use some of the given cues along with your own ideas. You are Arti Nirula of Class XII-A. (5)

Or

You are Hina Aziz, student of Class XII-D and a member of the school magazine editorial board. Write a comprehensive report detailing the activities undertaken by students as part of the celebrations on Yoga Day. Include descriptions of the events, participation details, and the overall impact of these activities on the school community.

SECTION – C : LITERATURE

C1. Read the following extract and answer the questions on ANY ONE. (6)

(A) Those who prepare green wars.
Wars with gas, wars with fire,
Victory with no survivors,
Would put on clean clothes
And walk about with their brothers
In the shade, doing nothing
(Keeping Quiet)

- 1) What is common outcome of all the wars described?
- 2) What does the imagery of 'walk about with their brothers in the shade' primarily represent?
 - a) The readiness for further conflicts
 - b) A return to normal activities post-conflict
 - c) A moment of unity and peaceful reflection
 - d) The physical environment of a typical warzone

3) Complete the following suitably:

The putting on of 'clean clothes' by the warmongers, symbolizes....

4) Select the correct option from those given in bracket, to fill in the blank.

The excerpt tells us that the speaker of modern warfare _____
(condemns/glorifies) the destructive nature.

5) **Read the Assertion and the Reason below, with reference to the given extract.**

Assertion : The poet advocates for 'doing nothing' as a way to prevent the devastation of war.

Reason: 'Doing nothing' refers to a time for stopping any action for a few moments.

Choose the correct option regarding their relationship.

- a) Both the Assertion and the Reason are true, and the Reason is the correct explanation of the Assertion.
- b) Both the Assertion and the Reason are true, but the Reason is not the correct explanation of the Assertion.
- c) The Assertion is true, but the Reason is false.
- d) the Assertion is false, but the Reason is true.

- 6) How can the message in the excerpt, about the outcome of wars be applied to promote peace?

Or

- (B) I saw my mother, beside me,
doze, open mouthed, her face ashen like that
of a corpse and realised with pain
that she was as old as she looked
(My Mother at Sixty-Six)

- 1) Select the phrase that suggests the following.
The author realised that her mother was nearing her death.
- 2) Select the option that has the same literary device used in the extract.
 - a) I am as happy as I can be.
 - b) Life is a roller coaster ride.
 - c) Nature is God's gift to us.
 - d) The dazzling divas enchanted all.
- 3) Complete the following sentences with reference to the extract.
The pain the poet is feeling is the pain of _____.
- 4) Select the correct option to fill in the blank.
The poet doesn't want to stay away from her mother she feels _____
(guilty/ashamed) of leaving her mother behind, knowing that her mother might die soon.
- 5) Read the Assertion and the Reason below, with reference to the given extract.
Assertion: The poet does not want to leave her mother and move on in her life.
Reason: The poet realises that her parents had aged and is pained to leave her behind.
Choose the correct option regarding their relationship.
 - a) Both the Assertion and the Reason are true and the Reason is the correct explanation of the Assertion.
 - b) Both the Assertion and the Reason are true, but the Reason is not the correct explanation of the Assertion.
 - c) The Assertion is true, but the Reason is false.
 - d) The Assertion is false, but the Reason is true.
- 6) State in one sentence what the use of the words 'ashen face' indicates to you.

C2. Read the given extracts and answer the questions of any one of the given two: (4)

The Maharaja and the dewan held deliberations over this issue. As a result, a telegram was despatched forthwith to a famous British company of jewellers in Calcutta. 'Send samples of expensive diamond rings of different designs. (The Tiger King)

- a) Complete the following sentence appropriately with reference to the extract. The rings were gifted to _____.
- b) Which emotions were the Maharaja and the dewan feeling in the extract?
- c) Why were the deliberations held?
 - a. To find out a way to procure tigers
 - b. To please the British officer
 - c. To save the kingdom from usurpation
 - d. To gain favours from the British
- d) With what purpose does Maharaja seek to send the rings to the wife of the British Officer?

Or

Students on Ice, the programme I was working with on the Shokalskiy, aims to do exactly this by taking high school students to the ends of the world and providing them with inspiring educational opportunities which will help them foster a new understanding and respect for our planet. It's been in operation for six years now, headed by Canadian Geoff Green, who got tired of carting celebrities and retired, rich, curiosity-seekers who could only 'give back in a limited way. With Students on Ice, he offers the future generation of policy-makers a life-changing experience at an age when they're ready to absorb, learn and most importantly, act.

(Journey to the End of the Earth)

- a) Complete the following sentence with reference to the extract. Students on Ice is a programme which was started by Geoff Green to _____.
- b) List any one emotion that students must have felt in the Students on Ice Programme.
- c) According to the extract, Green chose the high school students for the programme as:
 - a. he wanted candidates who were physically fit.
 - b. he wanted them to have an opportunity to learn more about the planet.
 - c. he wanted young minds that he could mould to his will,
 - d. he wanted to start a colony on the Southern pole.
- d) Why did Greene favour students against the rich for the Antarctica tour?

C3. Read the following extracts and answer the questions for Any One of the given: (6)

What a thunderclap these words were to me! Oh, the wretches: that was what they had put up at the town hall My last French lesson Why, I hardly knew how to write! I should never learn anymore! I must stop there, then! Oh. how sorry I was for not learning my lessons, for seeking birds' eggs, of going sliding on the Saar! My books, that had seemed such a nuisance a while ago, so heavy to carry, my grammar, and my history of the saints, were old friends now that I couldn't give up. And M. Hamel, too, the idea that he was going away, that I should never see him again, made me forget all about his ruler and how cranky he was. (The Last Lesson)

- a) What was the writer's purpose in using the metaphor of a thunderclap?
- b) Select the correct the options from the given brackets to fill in the blank.
The use of exclamatory marks in the first five sentences of the extract serves to express the speaker's _____ (hidden/intense) emotions.
- c) Complete the following suitably.
The activities of seeking birds' eggs and sliding on the Saar reveal two things about Franz's character before his change in perspective. First. his youthful carefree nature and second, hi preference for
- d) What is reflected through the shift in the speaker's perception of Mr. Hamel, conveyed through his readiness to forget the ruler?
- e) Select the textual option that is closest to indicating a sense of panic.
 - a. Oh, how sorry I was for not learning my lessons
 - b. Why, I hardly knew how to write!
 - c. Oh, the wretches, that was what they had put up at the town-hall!
 - d. And M. Hamel, too
- f) What does the following line from the extract, showcase?
My books, that had seemed such a nuisance a while ago, so heavy to carry, my grammar, and my history of the saints, were old friends now that I couldn't give up.
 - a. Realisation
 - b. Confusion
 - c. Expectation
 - d. Affirmation

Or

And survival in Seemapuri means rag-picking. Through the years, it has acquired the proportions of a fine art. Garbage to them is gold. It is their daily bread, a roof over their heads, even if it is a leaking roof. But for a child it is even more "I sometimes find a rupee, even a ten-rupee note," Saheb says, his eyes lighting up. When you can find a silver coin in a heap of garbage, you don't stop scrounging, for there is hope of finding more. It seems that for children, garbage has a meaning different from what it means to their parents.

For the children it is wrapped in wonder, for the elders it is a means of survival. (Lost Spring-Stories of Stolen Childhood)

- a) What does Saheb's statement about finding money in the garbage reveal about his daily life and aspirations?
- b) Select the correct option from those given in brackets to fill in the blank. Describing garbage as 'gold' metaphorically elevates its value to the children, helping the reader understand the _____ (dynamic/desperate) conditions under which these children live, where even garbage can represent crucial economic resources.
- c) Complete the following with a suitable reason. Children continue to scrounge in the garbage because _____.
- d) How does the perception of garbage differ between children and adults in Seemapuri?
- e) What is implied by the description of rag-picking as having acquired the proportions of a fine art in the excerpt?
 - a. Rag-picking is an undesirable and simple task that anyone can do without effort.
 - b. Rag-picking has evolved into a complex skill that is valued within the community.
 - c. Rag-picking is a temporary activity that does not significantly impact the community.
 - d. Rag-picking has the status of an artistic hobby that children pursue for enjoyment.
- f) What is the reason for Saheb's eyes "lighting up"?
 - a. The immediate experience of finding something valuable.
 - b. Discussing his findings with others.
 - c. Reminiscing about past findings in the garbage.
 - d. Planning future scavenging expeditions

C4. Answer the following questions in about 40-50 words: (10)

- a) Identify an instance of hope or resilience in 'Lost Spring' and analyse how it reflects one of the story's themes.
- b) Interpret the use of visual imagery by Kamla Das in her poem to depict the passage of time.
- c) What does the contrasting imagery of the church clock and Prussian trumpets represent in 'The Last Lesson'?
- d) Why did Douglas fail to come to the surface of the pool as he hoped to?
- e) According to Pablo Neruda, what do we not do when we keep quiet?

C5. Answer the following question in about 40-50 words: (4)

- a) Discuss the significance of toy tiger in the climax of 'The Tiger King'.
- b) How is global temperature increasing? What are the immediate fears due to it?

C6. Answer any 1 of the following question in about 120-150 words: (5)

- a) How, according to the poet can keeping quiet change our attitude towards life?

Or

'Lost Spring' explains the grinding poverty and traditions that condemn thousands of people to a life of abject poverty. Do you agree? Support your statement.

C7. Answer any 1 of the following question in about 120-150 words: (5)

- a) The Microscopic phytoplankton - those grasses of the sea that nourish and sustain the entire Southern Oceans food chain. It is an important part of our ecosystem. As a member of the marine club, write an article for your school magazine highlighting the roles and significance of phytoplankton.
- b) Astrologers predict, "the child will grow up to become the warrior of warriors, hero of heroes, champion of champions...". In contrast to the above statement, the Tiger King's death is an anti-climax. Comment.

SHARDEIN SCHOOL
UNIT-I EXAMINATION (2025-26)
CLASS – XII
SUBJECT : POLITICAL SCIENCE

TIME : 03 HOURS

MM : 80

General Instructions:

- a. All question are compulsory.
- b. Question numbers 1-12 are multiple choice question of one mark each.
- c. Question numbers 13-18 are 2 mark each. Answers to these question should not exceed 50 words each.
- d. Question numbers 19-23 are 4 mark each. Answers to these question should not exceed 100 words each.
- e. Question numbers 24-26 are passage, cartoon and map-based question. Answers accordingly.
- f. Question numbers 27-30 are 6 mark each. Answers to these question should not exceed 170 words.
- g. There is an internal choice in 6 marks question.

SECTION – A

Q1.	Which was the first Soviet Republic to declare its independence from Soviet Russia? a) Georgia b) Moldova c) Lithuania d) Armenia	1
Q2.	The interim government formed under the Cabinet Mission Plan was headed by which of the following? a) Dr. Rajendra Prasad b) Jawaharlal Nehru c) Sardar Vallabhbhai Patel d) Rajagopalachari	1
Q3.	When was Europe Union established in: a) 1990 b) 1991 c) 1992 d) 1993	1
Q4.	The constitution of India came into 26th effects on _____. a) 26th January 1949 b) 26th November 1949 c) 26th January 1950 d) 29th March 1948	1
Q5.	Russia took over the USSR seat in the UN in which of the following year? a) December 1990 b) December 1991 c) December 1992 d) December 1993	1

Q6.	Name the original state from which Chhattisgarh was carved out. a) Uttar Pradesh b) Bihar c) Jharkhand d) Madhya Pradesh	1
Q7.	Which institution became active player in wake of developmental needs of the second world countries? a) Amnesty International b) World Bank c) NATO d) Commonwealth of Independent	1
Q8.	The party that won the second largest number of Lok Sabha seats in the first elections was the _____. a) Praja Socialist party b) Jana Sangh c) Communist party of India d) Socialist Party	1
Q9.	Consider the following statements and pick the correct one. 1) The USSR contained 15 constituent republics. 2) It was formed on 30th December 1924. 3) It was the largest country in terms of area. Codes: a) Only (1) b) Both (2) and (3) c) Both (2) and (1) d) All of these	1
	Directions (Q. Nos. 10-11) after reading the Assertion and Reason, select the correct codes according to the codes given below. Codes: a) Both (A) and (R) are true and (R) is the correct explanation of (A). b) Both (A) and (R) are true, but (R) is not the correct explanation of (A). c) (A) is true, but (R) is false. d) (A) is false, but (R) is true.	
Q10.	Assertion (A): Russian President Yeltsin assured the Indian Prime Minister P.V.Narasimha Rao that Russia's relationship and co-operation with India would continue. Reason (R): The decision to end Rupee trade and to switch over to hard currencies was taken. Russia also favoured strategic co-operation with India.	1
Q11.	Assertion (A): The drawing of the border demarcating the territory of each country marked the culmination of political developments. Reason (R): On 14th-15th August, 1947, not one but two nation-states came into existence -India and Pakistan. This was a result of 'partition', the division of British India into India and Pakistan.	1

Q12.	<p>Consider the following statement and select the incorrect statement (s) from the codes below.</p> <ul style="list-style-type: none"> i. All the Muslim left India during Partition ii. Jawaharlal Nehru advocated security and democratic rights for Muslims iii. Tryst with destiny speech was delivered by BR Ambedkar <p>Codes:</p> <ul style="list-style-type: none"> a) Both (1) and (2) b) Both (1) and (3) c) Only (2) d) All of these 	1
<u>SECTION – B</u>		
Q13.	What is meant by Shock Therapy?	2
Q14.	Identify any two consequences of the partition of India in 1947.	2
Q15.	How can we say that ASEAN is an economic association?	2
Q16.	How the First elections of India were called competitive?	2
Q17.	Why is it said that collapse of Berlin wall signified the collapse of bipolar world?	2
Q18.	Explain the role played by Sardar Patel in the integration of princely states into the Indian Union.	2
<u>SECTION – C</u>		
Q19.	Mention the methods of 'Shock Therapy' among the former Second World countries.	4
Q20.	Describe briefly any four problems faced in the process of partition of India.	4
Q21.	How has the European Union evolved over time from an economic union to an increasingly political one?	4
Q22.	Why did Soviet system become so weak and Soviet economy stagnant?	4
Q23.	What problems were involved at the integration of princely states during nation building?	4
<u>SECTION – D</u>		
Q24.	<p>Read the given passage carefully and answer the questions that follows:</p> <p>America extended financial help for reviving Europe 'economy under what was called the 'Marshall Plan'.</p> <p>The US also created a new collective security structure under NATO. Under the Marshall Plan, the Organisation for European Economic Cooperation (OEEC) was established in 1948 to channel aid to the west European states. It became a forum where the western European states began to cooperate on trade and economic issues. The Council of Europe, established in 1949, was another step forward in political cooperation. The process of</p>	4

economic integration of European capitalist countries proceeded step by step (see Timeline of European Integration) leading to the formation of the European Economic Community in 1957.

- 1) The financial help was extended by America for reviving _____ economy
 - a) Asian
 - b) American
 - c) African
 - d) European
- 2) What was the collective security structure created by the US?
 - a) SEATO
 - b) CENTO
 - c) NATO
 - d) Any other
- 3) Why was the Organisation for European Economic Cooperation established?
 - a) To aid the African Nation
 - b) To aid the West European States
 - c) To aid the Asian States
 - d) None of the above
- 4) When was the European Economic Community came I to light?
 - a) 1984
 - b) 1949
 - c) 1957
 - d) 1960

Q25.


Study the picture given below and answer the questions that follow:

4



Questions:

- a) What does this picture represent?
- b) Mention some consequences of partition.
- c) Which year is being denoted in the picture?

Q26.	<p>On a political outline map of world locate and label the following and symbolize them as indicated:</p> <p>WORLD POLITICAL</p>  <p>Questions:</p> <ol style="list-style-type: none"> An older member of EU between Portugal and France. An older member near Belgium and Netherlands. The two new members of EU. Four two members of EU. 	4
<u>SECTION – E</u>		
Q27.	<p>Discuss Indo-China relations.</p> <p style="text-align: center;">Or</p> <p>What was Soviet system? Assess any four features of Soviet system.</p>	6
Q28.	<p>How did the reorganization of states take place in India after its independence? Explain.</p> <p style="text-align: center;">Or</p> <p>How did China rise to be an economic superpower? Assess.</p>	6
Q29.	<p>Why is the EU considered a highly influential regional organisation in the economic, political and military fields?</p> <p style="text-align: center;">Or</p> <p>Explain six factors which helped Soviet Union becoming super power after second world war.</p>	6
Q30.	<p>Describe the various steps taken to hold the first general elections in India. How far these elections were successful?</p> <p style="text-align: center;">Or</p> <p>Explain any three challenges faced by India at the time of its independence.</p>	6

SHARDEIN SCHOOL
UNIT-I EXAMINATION (2025-26)
CLASS – XII
SUBJECT : CHEMISTRY

TIME : 03 HOURS

MM : 70

General Instructions:

Read the instructions carefully:

- a. There are 33 questions in this question paper with internal choice.
- b. SECTION A consists of 16 multiple -choice questions carrying 1 mark each.
- c. SECTION B consists of 5 short answer questions carrying 2 marks each.
- d. SECTION C consists of 7 short answer questions carrying 3 marks each.
- e. SECTION D consists of 2 case-based questions carrying 4 marks each.
- f. SECTION E consists of 3 long answer questions carrying 5 marks each.
- g. All questions are compulsory.
- h. Use of log tables and calculators is not allowed.

SECTION – A

Q1.	Which of the following condition is not satisfied by an ideal solution? a) $\Delta H_{\text{mixing}} = 0$ b) $\Delta V_{\text{mixing}} = 0$ c) Raoult's Law is obeyed d) Formation of an azeotropic mixture	1
Q2.	When one mole of $\text{CoCl}_3 \cdot 5\text{NH}_3$ was treated with excess of silver nitrate solution, 2 mol of AgCl was precipitated. The formula of the compound is: a) $[\text{Co}(\text{NH}_3)_5 \text{Cl}_2] \text{Cl}$ b) $[\text{Co}(\text{NH}_3)_5 \text{Cl}] \text{Cl}_2$ c) $[\text{Co}(\text{NH}_3)_4 \text{Cl}_2] (\text{NH}_3) \text{Cl}$ d) $[\text{Co}(\text{NH}_3)_3 \text{Cl}_3] (\text{NH}_3)_2$	1
Q3.	Which of the following statements about SN2 mechanisms is incorrect? a) The transition state is stable b) The complete mechanism takes place in a single step c) The rate of the reaction depends on the concentration of both reactants. d) There is an inversion of configuration	1
Q4.	Colligative properties depend on: a) The nature of the solute b) The number of solute particles in solution c) The physical properties of solute d) The nature of the solvent	1

Q5.	<p>Primary and secondary valency of Pt in $[\text{Pt}(\text{en})_2\text{Cl}_2]\text{Cl}_2$.</p> <p>a) 4, 4 b) 4, 6 c) 6, 4 d) 2, 6</p>	1
Q6.	<p>What is 3-Bromopropene's common name?</p> <p>a) Allyl bromide b) Vinyl bromide c) Tert-Butyl bromide d) Propylidene bromide</p>	1
Q7.	<p>The van't Hoff factor (i) accounts for</p> <p>a) degree of solubilisation of solute b) The extent of dissociation of solute c) The extent of dissolution of solute d) The degree of decomposition of solution</p>	1
Q8.	<p>Which of the following haloalkanes is optically active?</p> <p>a) 1-Chloropropane b) 1-Bromopropane c) 1-Iodopropane d) 1-Fluoropropane</p>	1
Q9.	<p>p-dichlorobenzene has higher melting point than its o- and m-isomers. Why?</p> <p>a) m-dichlorobenzene is more polar than o-isomer b) p-isomer has a symmetrical crystalline structure c) boiling point of o- isomer is more than p-isomers d) All of these are correct</p>	1
Q10.	<p>Osmotic pressure of a solution is 0.0821 atm at a temperature of 300K. The concentration in moles / litre will be</p> <p>a) 0.33 b) 0.666 c) 0.3×10^{-2} d) 3</p>	1
Q11.	<p>Fac-mer isomerism is associated with which one of the following complexes?</p> <p>a) $[\text{M}(\text{AA})_2]$ b) $[\text{MA}_3\text{B}_3]$ c) $[\text{M}(\text{AA})_3]$ d) $[\text{MA}_4\text{B}_2]$</p>	1

Q12.	<p>IUPAC name of $[\text{Pt}(\text{NH}_3)_3\text{Br}(\text{NO}_2)\text{Cl}]\text{Cl}$ is</p> <p>a) triamminechlorodibromidoplatinum (IV) chloride b) triamminechloridobromidonitrochloride-platinum (IV) chloride c) triamminebromidochloridonitroplatinum (IV) chloride d) triamminenitrochlorobromoplatinum (IV) chloride</p>	1
	<p>Select the most appropriate answer from the options given below:</p> <p>a) Both (A) and (R) are true and (R) is the correct explanation of (A). b) Both (A) and (R) are true but (R) is not the correct explanation of (A). c) (A) is true but (R) is false. d) (A) is false but (R) is true.</p> <p>Given below are two statements labelled as Assertion (A) and Reason (R).</p>	
Q13.	<p>Assertion: $[\text{Ti}(\text{H}_2\text{O})_6]^{3+}$ is coloured while $[\text{Sc}(\text{H}_2\text{O})_6]^{3+}$ is colourless.</p> <p>Reason: d-d transition is not possible in $[\text{Sc}(\text{H}_2\text{O})_6]^{3+}$.</p>	1
Q14.	<p>Assertion: SN2 reaction is an optically active aryl halide with an aqueous solution of KOH always gives an alcohol with opposite sign of rotation.</p> <p>Reason: SN2 reactions always proceed with inversion of configuration.</p>	1
Q15.	<p>Assertion: When NaCl is added to water a depression in freezing point is observed.</p> <p>Reason: The lowering of vapour pressure of a solution causes depression in the freezing point.</p>	1
Q16.	<p>Assertion: Azeotropic mixtures are formed only by non-ideal solutions and they may have boiling points either greater than both the components or less than both the components.</p> <p>Reason: The composition of the vapour phase is same as that of the liquid phase of an azeotropic mixture.</p>	1
SECTION – B		
Q17.	<p>H_2S, a toxic gas with rotten egg like smell, is used for the qualitative analysis. If the solubility of H_2S in water at STP is 0.195 m. Calculate Henry's law constant.</p>	2
Q18.	<p>Predict all the alkenes that would be formed by dehydrohalogenation of the following halides with sodium ethoxide in ethanol and identify the major alkene:</p> <p>a) 1-Bromo-1-methylcyclohexane b) 2-Chloro-2-methylbutane c) 2, 2, 3-Trimethyl-3-bromopentane</p>	2

Q19.	<p>Explain the nature of bonding in the following coordination entities on the basis of valence bond theory:</p> <p>a) $[\text{Fe}(\text{CN})_6]^{4-}$</p> <p>b) $[\text{Co}(\text{C}_2\text{O}_4)_3]^{3-}$</p>	2
Q20.	<p>Draw one of the geometrical isomers of the complex which is optically inactive. Also write the name of this entity according to the IUPAC nomenclature.</p> <p style="text-align: center;">Or</p> <p>Explain the bonding in the coordination entity $[\text{Co}(\text{NH}_3)_6]^{3+}$ on the basis of valence bond theory. Also, comment on the geometry and spin of the given entity. (Atomic no. of Co = 27)</p>	2
Q21.	State Henry's law and mention some of its important applications.	2
SECTION – C		
Q22.	<p>a) Miscible liquid pairs often show positive and negative deviation from Raoult's law. Explain the reason for such deviation? Give one example of each of liquid pairs.</p> <p>b) A solution containing 18 g of non-volatile solute in 200g of water freezes at 272.07 K. Calculate the molecular mass of solute (given $K_f = 1.86 \text{ K/m}$)</p> <p style="text-align: center;">Or</p> <p>Calculate the osmotic pressure at 27°C of a solution formed by mixing equal volumes of two solutions, one containing 0.05 mole of glucose in 250 ml of solution and the other containing 3.42 g of $\text{C}_{12}\text{H}_{22}\text{O}_{11}$ in 250 ml of solution. $[R = 0.082 \text{ L atm mol}^{-1}\text{K}^{-1}]$</p>	3
Q23.	<p>a) Write IUPAC name of the complex: $[\text{CoCl}_2(\text{en})_2]^+$</p> <p>b) $[\text{Fe}(\text{H}_2\text{O})_6]^{3+}$ is strongly paramagnetic whereas $[\text{Fe}(\text{CN})_6]^{3-}$ is weakly paramagnetic. Explain. (At. no. Fe = 26)</p>	3
Q24.	<p>100 mg of a protein is dissolved in just enough water to make 10.0 mL of solution. If this solution has an osmotic pressure of 13.3 mm Hg at 25°C, what is the molar mass of the protein? $(R = 0.0821 \text{ L atm mol}^{-1} \text{ K}^{-1}$ and $760 \text{ mm Hg} = 1 \text{ atm.})$</p>	3
Q25.	<p>Which compound in each of the following pairs will react faster in SN2 reaction with $-\text{OH}$?</p> <p>a) CH_3Br or CH_3I</p> <p>b) $(\text{CH}_3)_3\text{CCl}$ or CH_3Cl and why?</p>	3

Q26.	<p>Indicate the types of isomerism exhibited by the following complexes and draw the structures for these isomers:</p> <p>a) $K[Cr(H_2O)_2(C_2O_4)_2]$</p> <p>b) $[Co(en)_3]Cl_3$</p> <p>c) $[Co(NH_3)_5(NO_2)](NO_3)_2$</p>	3
Q27.	<p>How will you bring about the following conversions?</p> <p>a) Ethane to bromoethene</p> <p>b) Propene to 1-nitropropane</p> <p>c) Toluene to benzyl alcohol</p>	3
Q28.	<p>Write down the IUPAC name for each of the following complexes and indicate the oxidation state, electronic configuration and coordination number. Also give stereochemistry and magnetic moment of the complex:</p> <p>a) $[Co(NH_3)_5Cl]Cl_2$</p> <p>b) $[CrCl_3(Py)_3]$</p>	3
SECTION – D		
Q29.	<p>A solution which obeys Raoult's law strictly is called an ideal solution, while a solution which shows deviation from Raoult's law is called a non-ideal solution or real solution. Suppose the molecules of the solvent and solute are represented by A and B respectively, and let Y_{AB}, Y_{AA} and Y_{BB} are the attractive forces between A-B, A-A and B-B respectively. An ideal solution of the components A and B is defined as the solution in which the intermolecular interactions between the components A-B are of the same magnitude as the intermolecular interactions found in the pure components A-A and B-B. Similarly, a non-ideal solution of the components A and B is defined as the solution in which the intermolecular interactions between the components A-B are of the different magnitude as the intermolecular interactions found in the pure components A-A and B-B.</p> <p>a) Which type of deviation will be shown by the solution, if $Y_{AB} < Y_{AA}$?</p> <p>b) On mixing liquid A and liquid B, volume of the resulting solution decreases, what type of deviation from Raoult's law is shown by?</p> <p>c) Write two characteristics of non-ideal solution.</p> <p>d) What type of liquids on the ideal solutions?</p>	4

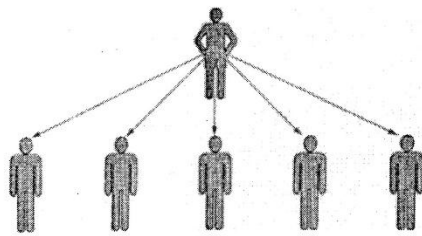
Q30.	<p>In coordination compounds, metals show two types of linkages, primary and secondary. Primary valencies are ionisable and are satisfied by negatively charged ions. Secondary valencies are non-ionisable and are satisfied by neutral or negative ions having lone pair of electrons. Primary valencies are non-directional while secondary valencies decide the shape, of the complexes.</p> <p>a) If $\text{PtCl}_2 \cdot 2\text{NH}_3$ does not react with AgNO_3, what will be its formula?</p> <p>b) What is the secondary valency of $[\text{Co}(\text{en})_3]^{3+}$?</p> <p>c) (i) Write the formula of Iron(III) hexacyanidoferrate(II). (ii) Write the IUPAC name of $[\text{Co}(\text{NH}_3)_5\text{Cl}]\text{Cl}_2$.</p> <p style="text-align: center;">Or</p> <p>Write the hybridization and magnetic behaviour of $[\text{Ni}(\text{CN})_4]^{2+}$. [Atomic number : Ni = 28]</p>	4
SECTION – E		
Q31.	<p>Each of the following questions are of 5 marks.</p> <p>a) What type of isomerism is shown by the complex $[\text{Co}(\text{NH}_3)_5(\text{SCN})]^{2+}$?</p> <p>b) Why is $[\text{NiCl}_4]^{2-}$ paramagnetic while $[\text{Ni}(\text{CN})_4]^{2-}$ is diamagnetic? [Atomic number of Ni = 28]</p> <p>c) Why are low spin tetrahedral complexes rarely observed?</p>	5
Q32.	<p>a) Why are alkyl halides insoluble in water?</p> <p>b) Why is butan-1-ol optically inactive but butan-2-ol is optically active?</p> <p>c) Although chlorine is an electron withdrawing group, yet it is ortho, para directing in electrophilic aromatic substitution reactions. Why?</p>	5
Q33.	<p>a) Draw the graph between vapour pressure and temperature and explain the elevation in boiling point of a solvent in solution.</p> <p>b) Determine the osmotic pressure of a solution prepared by dissolving 25 mg of K_2SO_4 in 2 lit of water at 25°C assuming it to be completely dissociated. (Atomic masses K = 39 u, S = 32 u, O = 16 u)</p>	5

SHARDEIN SCHOOL
UNIT-I EXAMINATION (2025-26)
CLASS – XII
SUBJECT : BUSINESS STUDIES

TIME : 03 HOURS

MM : 80

General Instructions:																		
a. All questions are compulsory.																		
<u>SECTION – A</u>																		
Q1.	The function of management relating to laying down the foundation for carrying out the other functions of management successfully is: e) Staffing f) Controlling g) Planning h) Organising		1															
Q2.	Alo a mobility platform is n the process of laying off 400-500 employees in a move aimed at driving cost efficiency. Which objective of management will firm not be able to achieve by carrying out this process. a) Efficiency b) Social c) Profit d) Survival		1															
Q3.	Which of the following statement best explains the Management is an Art? a) No formal qualification is required for the appointment as a manager in a company. b) Management has drawn its knowledge from other disciplines also. c) Two managers deal with the same problem differently. d) Outcomes of managerial actions cannot be predicted accurately.		1															
Q4.	Which of the following features of science is fully satisfied by management? a) Systematised body of knowledge b) Principles based on experimentation c) Universal validity d) Based on practice and creativity		1															
Q5.	Match the following:		1															
	<table border="1" style="width: 100%;"> <tr> <td style="width: 5%;">1</td> <td style="width: 45%;">Doing things on time</td> <td style="width: 5%;">a.</td> <td style="width: 45%;">Process</td> </tr> <tr> <td>2</td> <td>Doing things within time and cost</td> <td>b.</td> <td>No wastage of resources</td> </tr> <tr> <td>3</td> <td>Optimum utilisation of resources</td> <td>c.</td> <td>Efficiency</td> </tr> <tr> <td>4</td> <td>Series of steps</td> <td>d.</td> <td>Effectiveness</td> </tr> </table>	1	Doing things on time	a.	Process	2	Doing things within time and cost	b.	No wastage of resources	3	Optimum utilisation of resources	c.	Efficiency	4	Series of steps	d.	Effectiveness	
1	Doing things on time	a.	Process															
2	Doing things within time and cost	b.	No wastage of resources															
3	Optimum utilisation of resources	c.	Efficiency															
4	Series of steps	d.	Effectiveness															

Q6.	<p>Violation of the Principle of Esprit de Corps leads to:</p> <ol style="list-style-type: none"> 1. minimizing labour turnover 2. sales turnover 3. need for using penalties 4. disorder <p>a) 4 and 1 b) only 3 c) 2 and 3 d) 1 and 2</p>	1
Q7.	<p>In which book Henry Fayol has mentioned the 14 principles of management:</p> <ol style="list-style-type: none"> a) General and industrial management b) Management c) Industrial management d) Principles based management 	1
Q8.	<p>Which management expert is talked about mental revolution?</p> <ol style="list-style-type: none"> a) Fayol b) Taylor c) Fisherman d) Hamman 	1
Q9.	<p>Achievers Ltd. strictly follows this principle of management at all levels. Identify this principle from the following picture.</p> <div style="text-align: center;">  </div> <p>a) Order b) Unity of command c) Scalar chain d) Authority and responsibility</p>	1
Q10.	<p>Changes in fashions and tastes of consumers will:</p> <ol style="list-style-type: none"> a) Shift the market demand from existing product to new ones b) Increase the Sale c) Increase the cost of production d) Increase the profit 	1
Q11.	<p>The trend of health and fitness has created a demand for products like gyms, bottled mineral water, and food supplements, etc., these are the example of</p> <ol style="list-style-type: none"> a) Political Environment b) Legal Environment c) Economic Environment d) Social Environment 	1

Q12.	<p>Hitesh and Reena are entrepreneurs. They noticed that every year in the months of November and December, Delhi, the capital city of India, witnesses poor air quality and rise in pollution levels. They also observed that nowadays people are more concerned about quality of life. Sensing the need, they were the first to bring into the market a new Anti Pollution W 98 Mask which was not only helpful in combating the pollution but also in increasing the life expectancy of people. Their venture saw a massive success as there was no competitor.</p> <p>From the following, identify the importance of Business Environment highlighted above:</p> <ol style="list-style-type: none"> Business Environment helps in tapping useful resources. Business Environment enables the firm to identify the opportunities and in getting the first mover advantage. Business Environment helps in improving performance. Business Environment helps the firm to identify threats and early warning signals. 	1
Q13.	<p>Samaira and her friend, Sana wanted to watch a movie over the weekend. They booked the movie tickets online and chose the seats as per their preference at the click of a button at the desired movie hall. Now going to theatre for booking of tickets is no longer required.</p> <p>The dimension of business environment reflected in the above para is:</p> <ol style="list-style-type: none"> Social environment Legal environment Political environment Technological environment 	1
Q14.	<p>Statement I: Business Environment is dynamic as it differs from country to country.</p> <p>Statement II: Business Environment is largely uncertain as it is very difficult to predict future happenings.</p> <ol style="list-style-type: none"> Statement I is true and Statement II is false. Both the statements are false. Both the statements are true. Statement II is true and Statement I is false. 	1
Q15.	<p>A manager is required to make certain assumptions about the future which may be in the form of forecasts. This step in the planning process is known as:</p> <ol style="list-style-type: none"> Setting of objectives Identifying alternative courses of action Follow up action Developing premises <ol style="list-style-type: none"> only 1 only 4 2 and 3 3 and 4 	1

Q16.	<p>Planning results in decreasing.</p> <ol style="list-style-type: none"> Control Coordination future uncertainties Proper use of resource 	1
Q17.	<p>Planning is the most challenging activity for the management as</p> <ol style="list-style-type: none"> it guides all future actions leading to growth and prosperity of the business. specific goals are set out in the plans along with the activities to be undertaken to achieve the goals. if there was no planning, employees would be working indifferent directions and the organisation would not be able to achieve its desired goals. None of these <ol style="list-style-type: none"> option (2) option (1) option (4) option (3) 	1
Q18.	<p>Assertion (A): Planning is a primary function of management. Reason (R): Planning is required at all levels of management as well as in all departments of the organisation.</p> <ol style="list-style-type: none"> Both A and R are true and R is the correct explanation of A. Both A and R are true but R is not the correct explanation of A. A is true but R is false. A is false but R is true. 	1
Q19.	<p>Which of the following is true with respect to the step developing premises under the planning process?</p> <ol style="list-style-type: none"> Assumptions need not necessarily be same for all. Only a few managers are required to be familiar with and use the same assumptions. All of these Base material for assumptions can be in the form of forecasts, existing plans or any past information about policies. 	1
Q20.	<p>State whether the given statement is True or False:</p> <ol style="list-style-type: none"> Principles of management are same as techniques of management. 	1
Q21.	<p>Explain any three points of importance of coordination.</p> <p style="text-align: center;">Or</p> <p>Explain any three features of coordination</p>	3
Q22.	<p>Mohan, a manager expects his subordinates to adapt to the new environments and working conditions without giving them time to settle down. Which principle of management is being overlooked and why?</p>	3

Q23.	<p>Post demonitisation in a further push to a cashless economy, the Central cabinet has recently approved the ordinance for paying wages via electronic means. Accordingly, the government approved to Amend Section 6 of the Payment Of Wages Act 1936, to allow employers of certain industries to make payment through the electronic mode and cheques. The new ordinance will be applicable to the public sector.</p> <ul style="list-style-type: none"> Identify the various dimensions of business environment which relate to the above mentioned case. 	3
Q24.	<p>In Chak De India movie, Shahrukh Khan becomes the coach of the girls' hockey team. He knows that he has to prepare the girls for the international hockey matches and bring the world cup after winning. For this he prepares a long-term plan and thinks the ways how to beat the competitors. He coaches the girls to play in different ways like defensive, offensive, etc. At the outset of a match he explains who will open the match, and how the ball will be passed by one player to another step by step.</p> <ul style="list-style-type: none"> Identify any three types of plans that are highlighted in the above case, quoting the lines from it. 	3
Q25.	<p>Distinguish between Time study and Motion study.</p> <p style="text-align: center;">Or</p> <p>Explain</p> <ol style="list-style-type: none"> Fatigue study Differential piece wage system 	4
Q26.	<p>"Zero Defect Zero Effect" (ZED) is a slogan coined by the Prime Minister of India, Narendra Modi with reference to the Make in India initiative launched by the government. The slogan reflects the efficiency of production processes, i.e. the products have no defects and the process through which the product is made has zero adverse environmental and ecological effects. The ZED model aims to make India the manufacturing hub of the world and prevent the products developed in India from being rejected by the global market. Moreover, before the initiative was launched, the limits of foreign direct investment in various sectors had been relaxed. The application for licenses was made available online and the validity of licenses was increased to three years. Various other norms and procedures were also relaxed by the government.</p> <ul style="list-style-type: none"> In light of the above paragraph, identify and explain the major component of the New Economic Policy of 1991 that is being referred to by quoting lines from the paragraph. 	4
Q27.	<p>Explain the following types of plans:</p> <ol style="list-style-type: none"> Strategy Procedure 	4
Q28.	<p>The process of planning involves certain logical steps. Explain the first four steps of this "process".</p>	4

Q29.

Read the text carefully and answer the questions:

4

Fashion India Limited is a chain of ladies garments boutiques where most of the work is done manually. Mr. Govind is responsible for the welfare and survival of the organisation. He formulates overall organisational goals and strategies for their achievement.

Due to coming of international brands in India, the company is finding it difficult to compete on two fronts finishing and embroidery work. Mr. Sharma, the production manager of the company, realised that without modern machines it would not be possible for them to survive for long. The company purchased new hitech modern machines from Germany. During the production process, the manager observed that the quality of production is not as per standard and very often production is disrupted due to break down of machinery. The workers get frustrated by continuous rejection of output and started showing resistance towards new technology. To increase the efficiency of the workers, the company decided to train their workers on the job under the able guidance of specialists. The workers who are able to pick the skills are promoted and made incharge of the not so trained groups. This created positive impact and everybody became keen to learn. Suggestions from the workers are valued and workers are encouraged to communicate freely.

1. At which level of management is Mr. Govind working in Fashion India Limited?
 - a) Operational Management
 - b) Top Management
 - c) Ground level
 - d) Middle Management

2. At which level of management is Mr. Sharma working in Fashion India Limited?
 - a) Top Management
 - b) Floor level
 - c) Middle Management
 - d) Operational Management

3. The workers who are able to pick the skills are promoted and made incharge of the not so trained groups. This created positive impact and everybody became keen to learn. Identify the importance of management highlighted here.

4. Which of the following point of importance is not discussed in the above case?
 - a) Management increases efficiency
 - b) Management creates a dynamic organisation
 - c) Management helps in the development of society
 - d) Management helps in achieving personal objectives

Q30.	<p>Read the text carefully and answer the questions:</p> <p>Rahul Nath took over 'D North Motor Company' from his ailing father three months ago. In the past the company was not performing well. Rahul was determined to improve the company's performance. He observed that the methods of production as well as selection of employees in the company were not scientific. He believed that there was only one best method to maximise efficiency. He also felt that once the method is developed, the workers of the company should be trained to learn that 'best method'. He asked the Production Manager to develop the best method and carry out the necessary training. The Production Manager developed this method using several parameters right from deciding the sequence of operations, place for men, machines and raw materials till the delivery of the product to the customers. This method was implemented throughout the organisation. It helped in increasing the output, improving the quality and reducing the cost and wastage.</p> <ol style="list-style-type: none"> 1. He believed that there was only one best method to maximise efficiency. Identify the principle of scientific management followed by the Production Manager. 2. He also felt that once the method is developed, the workers of the company should be trained to learn that best method. Identify the principle of scientific management followed by the Production Manager. 3. The Production Manager developed this method using several parameters right from deciding the sequence of operations, place for men, machines and raw materials till the delivery of the product to the customers. Identify the principle/technique of scientific management as given by Taylor discussed above. 4. Which of the following is not a principle of scientific management, as given by Taylor? <ol style="list-style-type: none"> a) Harmony, Not Discord b) Development of each and every person to his or her greatest efficiency and prosperity c) Functional Foremanship d) Science, not rule of thumb 	4
Q31.	<p>Explain the following features of principles of management:</p> <ol style="list-style-type: none"> a) General guidelines b) Mainly behavioural c) Formed by practice and experimentation 	6
Q32.	<p>What do you mean by business environment? Explain the key components of business environment.</p>	6

Q33.

Read the text carefully and answer the questions:

6

Monika is working as a Chief Executive Officer (CEO) in Elpis Technology Ltd. Vishal is working as a Production Manager in the same organisation though he does not possess any specific degree for this post. Ravi is also working in this organisation and constantly interacts with the workers and explains to them the plans drawn by middle level management and spends a lot of time correcting the work of Deepak, who is a new worker, and motivating him.

1. Identify the function that Monika would not have to perform as a Chief Executive Officer:
 - a) Integrating diverse elements and coordinating activities of different departments to achieve overall objectives.
 - b) Ensuring that wastage is minimised and safety standards are maintained.
 - c) Analysing business environment and its implication for survival of organisation.
 - d) Formulating overall organisational goals and strategies for their achievement.
2. Identify the level of management at which Vishal is working:
 - a) Middle level
 - b) Top level
 - c) Operational level
 - d) Supervisory level
3. In spite of not possessing any specific degree, Vishal is working as a Production Manager in Elpis Technology Ltd. This reflects that management does not strictly meet one of the following criteria of a profession. Identify the criterion/feature:
 - a) Restricted entry
 - b) Well defined body of knowledge
 - c) Ethical code of conduct
 - d) Service motive
4. At which level of management is Ravi working?
 - a) Supervisory level
 - b) At both top and middle level
 - c) Top level
 - d) Middle level
5. As a Production Manager, identify the function that Vishal would not perform:
 - a) Ensure that his department has the necessary number of personnel.
 - b) Interpret the policies framed by the Chief Executive Officer, Monika.
 - c) Motivate the employees of his department to achieve the desired objectives.
 - d) Interacting with the actual workforce.

	<p>6. Identify the function that Ravi would have to perform in addition to those mentioned in the above case.</p> <ol style="list-style-type: none"> a) Maintaining quality of output and safety standards b) Implementing the plans and strategies developed by Monika c) Cooperate with other departments for smooth functioning of the organisation d) Ensuring that his department has the necessary number of personnel 	
Q34.	<p>Read the text carefully and answer the questions:</p> <p>Two years ago Radhika completed her degree in food technology. She worked for some time in a company manufacturing chutneys, pickles and murabbas. She was not happy in the company and decided to have her own organic food processing unit for the same. She set the objectives and the targets and formulated an action plan to achieve the same. One of her objectives was to earn 10% profit on the amount invested in the first year. It was decided that raw materials like fruits, vegetables, spices, etc. will be purchased on three months credit form farmers cultivating organic crops only. She also decided to follow the steps required for the marketing of the products through her own outlets. She appointed Rakesh as a production manager who decides the exact manner in which the production activities are to be carried out. Rakesh also prepared a statement showing the number of workers that will be required in the factory throughout the year. Radhika informed Mohan about her sales target for different products, area -wise for the forthcoming quarter. While working on the production table a penalty of 100 per day for not wearing the caps, gloves and apron was announced.</p> <ol style="list-style-type: none"> 1. Which function of management has been discussed in the above para? <ol style="list-style-type: none"> a) Planning b) Organising c) Staffing d) Directing 2. One of the aims was to earn a 10% profit on the amount invested in the first year. Which type of plan has been discussed here? 3. Raw materials like fruits, vegetables, spices, etc. will be purchased on three months' credit from farmers cultivating organic crops only. Which type of plan has been discussed here? 4. To follow the steps required for the marketing of the products. Which type of plan has been discussed here? 	6

	<p>5. Statement showing the number of workers that will be required in the factory throughout the year. Which type of plan has been discussed here?</p> <p>6. She realised that the function she is performing requires higher thinking and long hours of dedication. Which characteristic of the function identified above is discussed here?</p>	
--	--	--

SHARDEIN SCHOOL
UNIT-I EXAMINATION (2025-26)
CLASS – XII
SUBJECT : PSYCHOLOGY

TIME : 03 HOURS

MM : 70

General Instructions:


- a. All the questions are compulsory except where internal choice has been given.
- b. Question no. 1-14 in section A carry 1 mark each. You are expected to answer them as directed.
- c. Question no. 15-19 in section B are very short answer type -I questions carrying 2 marks each. The answer to each question should not exceed 30 words.
- d. Question no. 20-23 in section C are short answer type -II questions carrying 3 marks each. The answer to each question should not exceed 60 words.
- e. Question no. 24-27 in Section D are long answer type -I questions carrying 4 marks each. The answer to each question should not exceed 120 words.
- f. Question no. 28-29 in Section E are long answer type -II questions carrying 6 marks each. The answer to each question should not exceed 200 words.
- g. Question no. 30-33 in Section F are based on two cases given. The answer to each 1-mark question should not exceed 20 words. The answer to each two-marks question should not exceed 30 words.

SECTION – A

Q1.	<p>Bobby is diagnosed with diabetes. However, he refuses to accept the diagnosis and continues to maintain the same lifestyle. Identify the defense mechanism that bobby is using.</p> <ol style="list-style-type: none"> a) Repression b) Rationalization c) Denial d) Displacement 	1
Q2.	<p>Which one of the following is true for personality assessment?</p> <ol style="list-style-type: none"> a) A person's behavior in a variety of situations can provide us with meaningful information about his/her personality. b) Indirect techniques can be scored in an objective manner. c) Direct methods of personality assessment cover the unconscious part of our behavior. d) Psychological testing requires great skill and training. <p style="margin-left: 40px;"> <ol style="list-style-type: none"> a. a and c b. a and d c. b and c d. b and d </p>	1

Q3.	<p>Rita wants to perform Options well in the examination and hence starts attending classes regularly, taking notes, setting study target, etc. which theory of intelligence gives importance to this stage of planning?</p> <p>a) Hierarchical model of intelligence b) PASS model c) Theory of Multiple Intelligences d) Structure of Intellect Model of Intelligence</p>	1
Q4.	<p>_____ involves seeking information from a person on a one-to-one basis.</p> <p>a) Case study b) Self-Report c) Interview d) Psychological test</p>	1
Q5.	<p>Hippocrates proposed a tropology of personality based on _____.</p> <p>a) Trigona's b) Humor c) Tridosha d) Body build and temperament</p>	1
Q6.	<p>Amit lacks motivation in life and has an overly complacent attitude. He remains relaxed and deals patiently with others. Which type of personality does Amit have according to Friedman and Rosenman?</p> <p>a) Type A b) Type B c) Type C d) Type D</p>	1
Q7.	<p>Anjani just found a gold bracelet inside a movie theatre. Which part of her personality would urge her to deposit it at the manager's office?</p> <p>a) Id b) Ego c) Superego d) Libido</p>	1
Q8.	<p>The IQ range for individuals with mild intellectual deficiency is _____.</p> <p>a) 55-69 b) 40-54 c) 25-39 d) Below 25</p>	1
Q9.	<p>Which of the following lists presents Freud's psychosexual stages in the order in which they occur?</p> <p>a) Anal, oral, genital, phallic and latency b) Genital, latency, anal, oral and phallic c) Oral, anal, phallic, latency and genital d) Oral, anal, latency, phallic and genital</p>	1

Q10.	Collective unconscious consists of _____ that are not individually acquired but are inherited. a) Traits b) Archetypes c) Conflicts d) Dreams	1
Q11.	If an individual is fat, soft and round along with a temperament that is relaxed and sociable, then he/she is said to have the characteristic of an; a) Endomorph b) Extrovert c) Ectomorph d) Mesomorph	1
Q12.	Checking one's own impulses and managing oneself is _____. a) Self-control b) Self-regulation c) Self-esteem d) None of the above	1
Q13.	Oedipus and Electra complexes are seen in _____ stages of psychosexual development. a) Oral b) Anal c) Phallic d) Genital	1
Q14.	_____ defined the intelligence as the ability to judge well, understand well and reason well.	1
<u>SECTION – B</u>		
Q15.	What are cardinal traits?	2
Q16.	Define Allport theory of personality.	2
Q17.	What is self?	2
Q18.	Write the full form of MMPI and TAT.	2
Q19.	Differentiate between aptitude and interest?	2
<u>SECTION – C</u>		
Q20.	Explain the levels of consciousness proposed by Freud.	3
Q21.	Give a short note on Maslow need hierarchy theory.	3
Q22.	Explain simultaneous and successive processing according to JP Das. Or Explain certain features of giftedness.	3
Q23.	How does the triarchic theory helps us to understand Intelligence?	3

<u>SECTION – D</u>		
Q24.	Explain Howard Gardener's theory of multiple intelligence in details.	4
Q25.	Explain various projective mechanisms of personality assessment in details.	4
Q26.	Analyse the features of creativity tests.	4
Q27.	State techniques of self-regulation.	4
<u>SECTION – E</u>		
Q28.	Describe Freud's psychosexual stages of personality development. Or What is IQ? How do psychologist classify people on the basis of their IQ scores?	6
Q29.	Description of any two tests; Ink blot, TAT, sentence completion test, Draw a person test.	6
<u>SECTION – F</u>		
<p>Q.30 & 31 (Case Study – I) Refer to the picture given below and answer the questions by choosing the most appropriate option:</p>		
		
Q30.	Which type of personality assessment is being depicted in the above picture? a) Projective technique b) Psychometric tests c) Behavioral analysis d) Self-report measures	1
Q31.	Explain how this technique assess personality?	2

Q.32 & 33 (Case Study – II)

	<p>This is a story of three students Ruby, Radhika and Shankar who were enrolled in an Undergraduate psychology program in a university. Ruby was the admission officer's dream. She was selected for the Program as she had perfect entrance test scores, outstanding grades and excellent letters of recommendation. But when it was time for Ruby to start coming up with ideas of her own, she disappointed her professors.</p> <p>On the other hand, Radhika did not meet the admission officer's expectations. She had good grades but low entrance exam scores. However, her letter of recommendation described her as a creative young woman, she could design and implement research work with minimal guidance at college. Shankar ranked somewhere in between the two students. He was satisfactory on almost every traditional measure of success. But rather than falling somewhere in the middle of his class at college, Shankar proved to be an outstanding student. His strength lay in the ability to not only adapt well to the demands of his new environment but also to modify the environment to suit his needs.</p>	
Q32.	<p>Two statements are given in the question below as Assertion (A) and Reasoning (R). Read the statements and choose the appropriate option.</p> <p>Assertion (A): Shankar is not high in contextual intelligence. Reasoning(R): Shankar was good at adapting well to the demands of his new environment and modifying the suit his needs.</p> <p>Options:</p> <ul style="list-style-type: none">a) Both A and R are true and R is the correct explanation of A.b) Both A and R are true, but R is not the correct explanation of A.c) A is true, but R is false.d) A is false, but R is true.	1
Q33.	<p>According to the above paragraph, what kind of abilities they need to fulfill the expectations? Write in your own words.</p>	2

SHARDEIN SCHOOL
UNIT-I EXAMINATION (2025-26)
CLASS – XII
SUBJECT : COMPUTER SCIENCE

TIME : 03 HOURS

MM : 70

General Instructions:

- a. Please check this question paper contains 35 questions.
- b. The paper is divided into 5 sections – A, B, C, D and E.
- c. Section A : consists of 18 questions (1 to 18). Each question carries 1 marks.
- d. Section B : consists of 7 questions (19 to 25). Each question carries 2 marks.
- e. Section C : consists of 5 questions (26 to 30). Each question carries 3 marks.
- f. Section D : consists of 2 questions (31 to 32). Each question carries 4 marks.
- g. Section E : consists of 3 questions (33 to 35). Each question carries 5 marks.
- h. All programming questions are to be answered using Python Language only.

SECTION – A

Q1.	State whether the given statement is True or False. i) Comments are not executed by interpreter.	1
Q2.	Fill in the blanks. a) _____ inside the function are not executed until the function is called.	1
Q3.	Which of the following is an invalid variable? a) 2nd_day b) Day_two c) _2 d) my_day_2	1
Q4.	Consider the given expression: $7 < 4$ or $6 > 3$ and not $10 = 10$ or $17 > 4$. Which of the following will be the correct output if the given expression is evaluated? a) NULL b) False c) None d) True	1
Q5.	Identify the valid arithmetic operator in Python from the following. a) and b) ? c) ** d) <	1

Q6.	Which method should I use to convert String “Python programming is fun” to “Python Programming is Fun”? a) istitle() b) upper() c) title() d) capitalize()	1
Q7.	Fill in the blank. _____ is not a valid built – in function for list manipulations. a) extend() b) length() c) count() d) append()	1
Q8.	Assertion (A): Creating an empty set is a bit different than creating a dictionary. Reason (R): Python provides the set() method used without an argument to create an empty set. a) Both A and R are true and R is the correct explanation of A. b) Both A and R are true but R is not the correct explanation of A. c) A is true but R is false. d) A is false but R is true.	1
Q9.	Assertion (A): The arguments are types of information that can be passed into the function. Reason (R): We can pass any number of arguments, but they must be separate with a semicolon. a) Both A and R are true and R is the correct explanation of A. b) Both A and R are true but R is not the correct explanation of A. c) A is true but R is false. d) A is false but R is true.	1
Q10.	To find the last element of list namely ‘smiles’ in Python, _____ will be used. a) smiles[: - 1] b) smiles[0] c) smiles[- 1] d) smiles[1pos]	1
Q11.	Using _____ the length of the program can be reduced. a) Array b) Dictionary c) String d) Recursion	1
Q12.	What is the order of resolving scope of a name in a Python program? (L: Local namespace, E: Enclosing namespace, B: Built – In namespace, G: Global namespace) a) G E B L b) B G E L c) L B E G d) L E G B	1

Q13.	<p>Out of the following, what is the correct syntax to copy one list into another?</p> <p>2) list A = listB[] 3) list A = listB[:] 4) list A = listB[] () 5) list A = list(listB)</p> <p>a) (1) and (2) b) (2) and (4) c) (2) and (3) d) (1) and (3)</p>	1
Q14.	<p>Which of the following function calls can be used to invoke the below function definition?</p> <pre>def test(a, b, c, d)</pre> <p>1) test(1, 2, 3, 4) 2) test(a = 1, 2, 3, 4) 3) test(a =1, b = 2, c = 3, 4) 4) test(a = 1, b = 2, c = 3, d = 4)</p> <p>a) (1) and (3) b) (1) and (4) c) (2) and (4) d) (3) and (4)</p>	1
Q15.	<p>Which of the following function calls will cause Error while invoking the below function definition?</p> <pre>def test(a, b, c, d)</pre> <p>1) list A = listB[] 2) list A = listB[:] 3) list A = listB[] () 4) list A = list(listB)</p> <p>a) (3) and (4) b) (1) and (2) c) (2) and (3) d) (1) and (4)</p>	1
Q16.	<p>Which of the following is / are correctly declared tuple(s)?</p> <p>a) a = ("Hina", "Mina", "Tina", "Nina") b) a = "Hina", "Mina", "Tina", "Nina" c) a = ("Hina", "Mina", "Tina", "Nina") d) a = ["Hina", "Mina", "Tina", "Nina"]</p>	1
Q17.	<p>Which of the following is an incorrect logical operator in Python?</p> <p>a) AND b) IN c) NOT d) OR</p>	1
Q18.	<p>Pick one the following statements to correctly complete the function body in the given code snippet.</p> <pre>def f(number): # Missing function body Print(f(5))</pre> <p>a) return number b) print(number) c) return "number" d) print("number")</p>	1

SECTION – B

Q19.	What will be the output of the following code? name = "Ruhaan" cls = 12 print(name, "is the student of class", Cls)	2
Q20.	Find the errors in following code and write the correct code. def extract_lesser(1, v): for num in 1: if: less_list.append(num) return less_list a) Underline the corrections. b) Write the reason!error next to it in comment form.	2
Q21.	Find and write the output of the following python code: for Name in ['Jayes', 'Ramya', 'Taruna', 'Suraj']: print(Name) if Name[0]= = 'T': break else: print('Finished!') print('Got it!')	2
Q22.	Find the error in the following code fragment. State the reason behind the error. box = { } jars = { } crates = { } box['biscuit']=1 box['cake'] = 3 jars['jam'] = 4 crates['box'] = box crates['jars'] = jars print (crates[box])	2
Q23.	What is the output of following code fragments? a) def increment(n): n.append([4]) return n L = [1, 2, 3] M = increment(L) print(L, M) b) def increment(n): n.append([49]) return n[0], n[1], n[2], n[3] L = [23, 35, 47] m1, m2, m3, m4 = increment(L) print(L) print(m1, m2, m3, m4) print(L[3] == m4)	2

Q24.	Write a python function generatelib (n) where n is the limit, using a generator function Fibonacci (max) (where max is the limit n) that produces Fibonacci series.	2
Q25.	Predict the output of the following code: <pre> num = 1 def myfunc(): num = 10 return num print num print myfunc() print num </pre>	2
<u>SECTION – C</u>		
Q26.	<p>a) How many times will the following for loop execute and what's the output?</p> <ol style="list-style-type: none"> 1. for i in range(- 1, 7, -2): for j in range (3): print(1, j) 2. for i in range(1, 3, 1): for j in range(i + 1): print('*') <p>b) Consider the following code and determine how many times statements 1 and 2 (marked) will get executed?</p> <pre> for a in range (0, 7, 4): print(a)# statement 1 for b in range (0, a+2, 2) print (b)# statement 2 </pre>	3
Q27.	How many ways are there in Python to represent an integer literal?	3
Q28.	<p>Consider the following code:</p> <pre> Inp input ("Please enter a string) while len (Inp) <= 4: if Inp[-1]== 'z': # condition 1 Inp = Inp [0:3] + 'c' elif 'a' in Inp: # condition 2 Inp = Inp [0] + 'bb' elif not int (Inp [0]): # condition 3 Inp = '1' +Inp [1:] + 'z' else: Inp = Inp + '*' print(Inp) </pre> <p>What will be the output produced if the input is</p> <ol style="list-style-type: none"> a) lbzz, b) 'la' c) 'abc' d) '0xy' e) 'xyz' 	3

Q29.	<p>Write the definition of a function ChangeGender() in Python, which reads the contents of a text file “BIOPIC.TXT” and displays the content of the file with every occurrence of the word 'he replaced by ‘she’ For example, if the content of the file “BIOPIC.TXT” is as follows</p> <p>Last time he went to Agra, there was too much crowd, which he did not like. So this time he decided to visit some hill station</p> <p><i>The function should read the file content and display the output as follows:</i></p> <p>Last time she went to Agra, there was too much crowd, which she did not like So this time she decided to visit some hill station.</p>	3
Q30.	<p>Write a function that takes a list that is sorted in ascending order and a number as argument. The function should do the following:</p> <ol style="list-style-type: none"> Insert the number passed as argument in a sorted list. Delete the number from the list. 	3
<u>SECTION – D</u>		
Q31.	<p>Read the text carefully and answer the questions:</p> <p>Krrishnav is looking for his dream job but has some restrictions. He loves Delhi and would take a job there, if he is paid over Rs. 40000 a month. He hates Chennai and demands at least Rs. 100000 to work there. In any another location, he is willing to work for Rs. 60000 a month. The following code shows his basic strategy for evaluating a job offer.</p> <pre> Pay = _____ Location = _____ if location == "Mumbai": print ("I'll take it!") #Statement 1 elif location == "Chennai": if pay < 100000: print ("No way") #Statement 2 else: print("I am willing!")#Statement 3 elif location =="Delhi" and pay >40000: print("I am happy to join")#Statement 4 elif pay > 60000: print("I accept the offer")#Statement 5 else: print("No thanks, I can find something better")#Statement 6 </pre>	4

	<p>On the basis of the above code, choose the right statement which will be executed when different inputs for pay and location are given.</p> <ol style="list-style-type: none"> 1. Input: location = "Chennai", pay = 50000 <ol style="list-style-type: none"> a) Statement 3 b) Statement 4 c) Statement 2 d) Statement 1 2. Input: location = "Surat", pay = 50000 <ol style="list-style-type: none"> a) Statement 4 b) Statement 2 c) Statement 5 d) Statement 6 3. Input location = "Any Other City", pay = 1 <ol style="list-style-type: none"> a) Statement 4 b) Statement 2 c) Statement 1 d) Statement 6 4. Input location = "Delhi", pay = 50000 <ol style="list-style-type: none"> a) Statement 3 b) Statement 5 c) Statement 4 d) Statement 6 	
Q32.	<p>Read the text carefully and answer the questions: SHRUTHI has to complete her file based assignment by tonight. She has been given the following text file (Education.txt):</p> <p>Higher education improves quality of life College graduates have longer life spans Education is birthright. Shruthi has also received the following incomplete code.</p> <pre>def fileFunction1 #Line5 _____ #Line6 fi. _____ #Line7 fi. _____ #Line8 fi.close() print("Done") def fileFunction2(fname, N1, N2): fi = open(fname) print(fi.read(N1)) fi.readline() print(fi.read(N2)) a = fi.readlines() print(a) N1 = 16 #Line1 N2 = 22 #Line2 string = "India strengthening" #Line3</pre>	4

```
fileFunction1 _____, _____ #Fill Line4  
fileFunction2('Education.txt', N1, N2)
```

1. Complete Line7 and Line8 so that the passed string is written on to the file, followed by a newline character.

- a) fi.write('string')
- b) fi.write[string]
- c) fi.write(string)
- d) fiwrite(string)

2. Complete Line8 so that the passed string is written on to the file, followed by a newline character.

- a) fi.write(' ')
- b) fi.write('/n')
- c) fi write(')
- d) fi.write()

3. What will be the output produced by the complete code?

- a) Done
Higher education
College graduates have
[longer life spans. "Education is birthright., India
strengthening]
- b) Done
Higher education
College graduates have
['longer life spans. '; 'Education is birthright.', 'India
strengthening']
- c) Done
Higher education
College graduates have
['longer life spans', 'Education is birthright.', 'India
strengthening']
- d) Done
Higher education
College graduates have
[longer life spans, 'Education is birthright.', 'India
strengthening']

4. Complete Line4 so that the function call to FileFunction1() passes two arguments: First as the filename and the second as the string given in Line3

- a) ('Education_txt', string)
- b) ('Education.txt', 'string.txt')
- c) (Education.txt, string)
- d) ('Education txt', string)

SECTION – E

Q33. (A)	Explain the term exception handling in detail.	4
Q33. (B)	Find the error in the following code: def minus(total_decrement) output = total_decrement minus(1000):	1
Q34.	Predict the output: a) a, b = 12,10 c = a // b + 4*2 d = c – 10 print(d) b) a = 5 b = 6 print((a and b) or (a > b)) c) a = 4 b = 6 c = 10 print(a>=b) or ((c==b) and (not(c <a)))) d) a = 4 b = 6 c = 10 print ((a <= b) and print(c) ((c==a)and (not (c <b)))) e) a = 3 b=4 c = a**b + 5 print(c)	5
Q35.	Following code intends to add a given value to global variable a. What will the following code produce? a) def increase(x): b) a = a + x c) return d) increase(b) e) print(a)	5

SHARDEIN SCHOOL
UNIT-I EXAMINATION (2025-26)
CLASS – XII
SUBJECT : HISTORY

TIME : 03 HOUR

MM : 80

General Instructions:

- a. This question paper contains 34 questions. All questions are compulsory.
- b. Question paper is divided into five sections A, B, C, D and E.
- c. Section A : Question No. 1 to 21 are multiple choice questions, carrying 1 mark each.
- d. Section B : Question No. 22 to 27 are short answer type questions carrying 3 marks each. Answer should be not exceed 60 to 80 words.
- e. Section C : Question No. 28 to 30 are long answer type questions carrying 8 marks each. Answer should be not exceed 200 to 250 words.
- f. Section D : Question No. 31 to 33 are Source based questions with three sub questions of 4 marks each.
- g. Section E: Question No. 34 is map based question carrying 5 marks.

SECTION – A

Q1.	<p>He was called as ‘Devanampiya’ and ‘Piyadassi’. He ruled the Indian subcontinent from C-268 to 232 BCE. He remembered for the propagation of Dhamma.</p> <p>j) Ashoka k) Chandragupta Maurya l) Smudragupta m) Ajatshatru</p>	1																								
Q2.	<p>Who among the following was the author of the book ‘Arthashastra’?</p> <p>a) Bimbisara b) Bindusara c) Chanakya d) Ajatshatru</p>	1																								
Q3.	<p>Match the following and select the correct option.</p> <table border="1" style="width: 100%; border-collapse: collapse; margin-bottom: 10px;"> <thead> <tr> <th colspan="2" style="text-align: left;">List I</th> <th colspan="2" style="text-align: left;">List II</th> </tr> <tr> <th colspan="2" style="text-align: left;">Harappan Site</th> <th colspan="2" style="text-align: left;">Famous for</th> </tr> </thead> <tbody> <tr> <td style="width: 5%;">i)</td> <td style="width: 45%;">Lothal</td> <td style="width: 5%;">a)</td> <td style="width: 45%;">Specialized centres for making shell objects</td> </tr> <tr> <td>ii)</td> <td>Kalibangan</td> <td>b)</td> <td>Near sources of carnelion</td> </tr> <tr> <td>iii)</td> <td>Dholavira</td> <td>c)</td> <td>Evidence of ploughed field found</td> </tr> <tr> <td>iv)</td> <td>Nageshwar</td> <td>d)</td> <td>Water reservoirs found</td> </tr> </tbody> </table> <p>Options:</p> <p>a) i-b, ii-c, iii-d, iv-a b) i-a, ii-d, iii-c, iv-b c) i-c, ii-b, iii-d, iv-a d) i-d, ii-a, iii-b, iv-c</p>	List I		List II		Harappan Site		Famous for		i)	Lothal	a)	Specialized centres for making shell objects	ii)	Kalibangan	b)	Near sources of carnelion	iii)	Dholavira	c)	Evidence of ploughed field found	iv)	Nageshwar	d)	Water reservoirs found	1
List I		List II																								
Harappan Site		Famous for																								
i)	Lothal	a)	Specialized centres for making shell objects																							
ii)	Kalibangan	b)	Near sources of carnelion																							
iii)	Dholavira	c)	Evidence of ploughed field found																							
iv)	Nageshwar	d)	Water reservoirs found																							

Q4.	<p>Why is the Harappan script called enigmatic? Choose the correct reason from the following options:</p> <p>a) It resembles the hieroglyphic script of Egypt. b) It had too many symbols, between 600 and 1000 in number. c) It was written from left to right. d) Its writing remains undeciphered to date.</p>	1
Q5.	<p>Piece of harvested land is found in which site?</p> <p>a) Banawali b) Kalibangan c) Lothal d) Harrappa</p>	1
Q6.	<p>Which of the following empire issued gold coins for the very first time in 1st century CE?</p> <p>a) Gupta empire b) Mauryan empire c) Kushana empire d) Yaudheya empire</p>	1
Q7.	<p>Identify the following image and write the name.</p> <div data-bbox="641 900 892 1285" data-label="Image"> </div>	1
Q8.	<p>Two statements labelled as Assertion (A) and Reason (R) given below. Read them carefully and select the correct option.</p> <p>Assertion (A) : People of Indus Valley Civilization was of utilisation nature. Reason (R) : In Indus Valley Civilization sculpture of Terracotta was used by common people.</p> <p>a) Both A and R are true and R is the correct explanation of A. b) Both A and R are true but R is not the correct explanation of A. c) A is true but R is false. d) A is false but R is true.</p>	1
Q9.	<p>Who deciphered the Brahmi and Kharosthi script?</p> <p>a) James John b) James Prinsep c) Nicholas d) Edison</p>	1

Q10.	<p>Consider the following statements regarding Magadha.</p> <p>a) Magadha was the most powerful Mahajanapadas.</p> <p>b) Initially Pataliputra was the capital of Magadha and later it was shifted to Rajagriha.</p> <p>c) Elephants were found in abundance in the forest of Magadha.</p> <p>i) (a) and (b)</p> <p>ii) (b) and (c)</p> <p>iii) (a) and (c)</p> <p>iv) (b) only</p>	1
Q11.	<p>Complete the following with correct options.</p> <p>Lothal : Gujarat :: Kalibangan : _____</p> <p>a) Maharashtra</p> <p>b) Madhya Pradesh</p> <p>c) Haryana</p> <p>d) Rajasthan</p>	1
Q12.	<p>The Sudarshana Lake was rebuilt by which ruler?</p> <p>a) Rudradaman</p> <p>b) Harsha</p> <p>c) Ashoka</p> <p>d) Kanishka</p>	1
Q13.	<p>Who among the following is often known as the 'Father of Indian Archaeology'?</p> <p>a) REM Wheeler</p> <p>b) Daya Ram Sahni</p> <p>c) Alexander Cunningham</p> <p>d) Rakhal Das Banerji</p>	1
Q14.	<p>Remains of canals are found in which site of Harappan civilization?</p> <p>a) Banawali</p> <p>b) Balakot</p> <p>c) Lothal</p> <p>d) Shortughai</p>	1
Q15.	<p>The region of Harappa, 'Meluha' known in Mesopotamia as?</p> <p>a) Region of kings</p> <p>b) Region of farmers</p> <p>c) Region of craftsman</p> <p>d) Seafarers</p>	1
Q16.	<p>Consider the following statements regarding identification of Shiva, a figure represented on Harappan seals.</p> <p>a) It is shown in the form of Gajapati.</p> <p>b) It is shown seated in yogic posture.</p> <p>c) It is surrounded by animals.</p> <p>d) It is shown with a female figure identifiable with Parvati.</p> <p>i) (a) and (d)</p> <p>ii) (b) and (c)</p> <p>iii) (b) and (d)</p> <p>iv) (c) and (d)</p>	1

Q17.	Who was Kautilya? a) Minister of Chandragupta b) Teacher of Ashoka c) Commander of Chandragupta d) Minister of Ashoka	1
Q18.	How many janapadas? a) 14 b) 15 c) 16 d) 17	1
Q19.	Who appointed Dhamma Mahamatra? a) Bimbisara b) Samudragupta c) Ashoka d) Pandya	1
Q20.	Early inscriptions were written in which language? a) Arabic b) Prakrit c) Hebrew d) English	1
Q21.	Choose the correct answer for the following. Epigraphy is known as _____. a) Study of inscription b) The skill of writing inscription c) To study the stone objects d) None of the above	1
<u>SECTION – B</u>		
Q22.	“The 6 th century BCE is often regarded as a major turning point in early Indian history”. Justify with 2 arguments. Or Write a short note on Sudarshan Lake.	3
Q23.	Describe the sources used to construct the history of Mauryan empire. Or “Magadha was the most powerful Mahajanapadas.” Examine the statement.	3
Q24.	How were Kharosthi inscriptions deciphered? Or Describe the army system of the Gupta Empire.	3
Q25.	“The most unique features of the Harappan Civilization was the development of domestic architecture”. Substantiate the statement. Or Write a short note on the items of food available to people in Harappan sites.	3

Q26.	Describe the sources to know about Harappan civilization. Or “The most unique features of Mohenjodaro was the planned urban centre.” Support the statement with examples.	3
Q27.	Describe the features of Harappan drainage system. Or Explain the layout design of the Great Bath on the Citadel in Mohenjodaro.	3
<u>SECTION – C</u>		
Q28.	How do we know that the Harappan civilization traded with other countries? Or Describe some of the distinctive features of Mohenjodaro.	8
Q29.	What kind of agricultural practices existed in the Harappan civilization? Or List the raw materials required for craft production in the Harappan civilization and discuss how these might have been obtained?	8
Q30.	Discuss the main features of Mauryan administration. Which of these elements are evident in the Ashokan inscriptions that you have studied? Or What were the main principles of Ashoka’s Dhamma? Why was it introduced?	8
<u>SECTION – D</u>		
Q31.	Read the given source and answer the questions that follow. The Plight of Harappa Although Harappa was the first site to be discovered, it was badly destroyed by brick robbers. As early as 1875, Alexander Cunningham, the first Director-General of the Archaeological Survey of India (ASI), often called the father of Indian archaeology, noted that the amount of brick taken from the ancient site was enough to lay bricks for "about 100 miles" of the railway line between Lahore and Multan. Thus many of ancient structures of the site were damaged. In contrast Mohenjodaro was far better preserved. a) Who is known as the father of Indian Archaeology? b) Which 2 major sites have been mentioned in this extract? c) What was the observation of Alexander Cunningham about the site of Harappa?	4

Q32.	<p>Read the given source and answer the questions that follow.</p> <p style="text-align: center;">In Praise Of Samudragupta</p> <p>This is an excerpt from the Prayaga Prashasti. He was without an antagonist on Earth; he, by the overflowing of the multitude of (his) many good qualities adorned by hundreds of good actions, he wiped off the fame of other kings with the soles of (his) feet (he is) Purusha (the Supreme Being), being the cause of the prosperity of the good and the destruction of the bad (he is) incomprehensible; (he is) one whose tender heart can be captured only by devotion and humility; (he is) possessed of compassion; (he is) the giver of many hundred thousands of cows.</p> <p>His mind has received ceremonial initiation for the uplift of the miserable, the poor, the forlorn and the suffering; (he is) resplendent and embodied kindness to mankind; (he is) equal to (the Gods) Kubera (the God of wealth), Varuna (the God of the ocean), Indra (the God of rains) and Yama (the God of death).</p> <p>a) Give the meaning of Prashasti. b) 'Samudragupta is compared to gods'. Justify the comparison. c) Name 2 sources used to reconstruct the history of Gupta rulers.</p>	4
Q33.	<p>Read the given source and answer the questions that follow.</p> <p style="text-align: center;">The Importance Of Boundaries</p> <p>The Manusmriti is one of the best-known legal texts of early India, written in Sanskrit and compiled between 2nd century BCE and 2nd century CE. This is what the text advises the king to do. Seeing that in the world controversies constantly arise due to the ignorance of boundaries, he should... have concealed boundary markers buried—stones, bones, cow's hair, chaff, ashes, potsherds, dried cow dung, bricks, coal, pebbles and sand. He should also have other similar substances that would not decay in the soil buried as hidden markers at the intersection of boundaries.</p> <p>a) Mention the controversies that constantly arose in the world during 2nd century BCE and 2nd century CE. b) What advices were given on the king to solve these controversies? c) How were these advices useful to solve the controversies?</p>	4
<u>SECTION – E</u>		
Q34.	<p>On the given political outline map of India locate and label the following with appropriate symbols.</p> <p>a) Magadha b) Taxila c) Mohenjodaro d) Lothal e) Kalibangan</p>	5

SHARDEIN SCHOOL
UNIT-I EXAMINATION (2025-26)
CLASS – XII
SUBJECT : PHYSICS

TIME : 03 HOURS

MM : 70

General Instructions:

- a. There are 33 questions in all. All questions are compulsory.
- b. Section A has 16 questions carry 1 mark each.
- c. Section B has 5 questions carry 2 marks each.
- d. Section C has 7 questions carry 3 marks each.
- e. Section D has 2 questions carry 4 marks each.
- f. Section E has 3 questions carry 5 marks each.

SECTION – A

Q1.	A positively charged glass rod attracts an object. The object must be: a) Negatively Charged b) Neutral c) Either negatively charged or neutral d) A magnet	1
Q2.	A dipole is placed parallel to be electric field. If W is the work done in rotating the dipole by 60° . a) $2W$ b) $3W$ c) $4W$ d) $W/2$	1
Q3.	A Charge Q is placed at the corner of a cube: the electric flux through all the six faces of the cube is. a) Q/E_0 b) $Q/6E_0$ c) $Q/8E_0$ d) $Q/3E_0$	1
Q4.	In fig the capacitors C1, C3, C4, C5 have a capacitance $4\mu\text{f}$ each. If the capacitor C2 has a capacitance $10\mu\text{f}$, then effective capacitance between A & B coil be. <div style="text-align: center;"> </div> a) $2\mu\text{f}$ b) $4\mu\text{f}$ c) $6\mu\text{f}$ d) $8\mu\text{f}$	1
Q5.	Dimensional formula of resistivity is: a) $[ML^2T^{-2}A^{-1}]$ b) $[ML^3T^{-3}A^{-2}]$ c) $[ML^3T^2A^{-1}]$ d) $[ML^{-2}T^{-2}A^{-2}]$	1
Q6.	The length of a given cylindrical wide is increased by 100%. due to consequent decrease in diameter, the change in resistance of the wide will be: a) 200% b) 100% c) 50% d) 300%	1

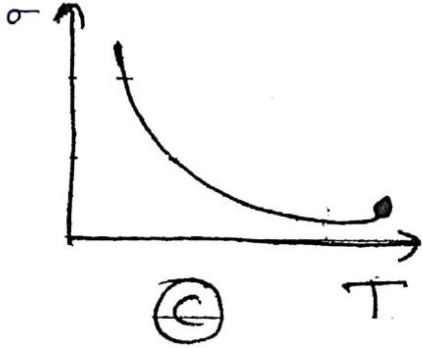
Q16.	<p>Assertion (A): The electric potential inside a conductor is constant.</p> <p>Reason (R): Electric field inside a conductor is zero in electrostatic equilibrium.</p>	1
------	---	---

SECTION – B

Q17.	What is charge? Give some of its important properties.	2
Q18.	Define an Electric dipole and dipole moment. Give its SI Unit.	2
Q19.	Show that in a uniform electric field a dipole experiences only a torque but not net force. Derive an expression for the torque.	2
Q20.	<p>Fig (A) Shows the Electric field lines around three point charges A, B and C.</p> <div style="text-align: center;"> </div> <p>a) Which charges are positive? b) Which charge has the largest magnitude? Why?</p> <p style="text-align: center;">Or</p> <p>Does the charge given to a metallic sphere depend on whether it is hollow or solid? Give reason for your answer.</p>	2
Q21.	State Ohm's law. What is meant by resistance and conductance? Give their units.	2

SECTION – C

Q22.	In a rectangular co-ordinate system, a charge of 25×10^{-9} C is placed at the origin of co-ordinates and a charge of -25×10^{-9} C is placed at the point $x = 6\text{m}$, $y = 0$. What is the Electric field at (a) $x = 3\text{m}$ (b) $x = 3\text{m}$, $y = 4\text{m}$?	3
Q23.	Prove that the electric field is the negative of the potential gradient.	3
Q24.	<p>Obtain the equivalent capacitance of the following network as show in for a 300V supply determine the charge and voltage across each capacitor.</p> <div style="text-align: center;"> </div>	3

Q25.	Derive the expression for the energy stored in charged capacitor. Where does the energy reside?	3
Q26.	Name the carries of electric current in: a) A bar made of silver b) A Valatic Cell c) A germanium semiconductor Or If a copper wire is stretched to make it 1% longer, what is the percentage change in its resistance?	3
Q27.	Explain with the help of a graph, the variation of conductivity with temperature for a metallic conductor. 	3
Q28.	Estimate the average drift speed of electrons in a copper wire of cross-sectional area $2.5 \times 10^{-7} \text{m}^2$ carrying a current of 1.8A. Assume the density of conduction Electrons to be $9 \times 10^{28} \text{m}^{-3}$.	3
SECTION – D		
Q29.	Case study-I Electric Field (E) due to charge at a point in space may be defined as the force that a unit positive charge would experience if placed at that point and electric potential (V) at a point in an electric field is equal to the work done in bringing a unit positive charge from infinity to the point under consideration while keeping the charge in equilibrium further $E = \frac{F}{q}$ and $V = \frac{W}{q}$ I) The magnitude of electric field, field which can just balance a deuteron of mass $3.2 \times 10^{-27} \text{ Kg}$ is a) $2.0 \times 10^{-5} \text{ N/C}$ b) $2.0 \times 10^{-7} \text{ N/C}$ c) $2.0 \times 10^{-9} \text{ N/C}$ d) $2.0 \times 10^{-11} \text{ N/C}$ II) A charged plastic ball of mass $7.8 \times 10^{-16} \text{ kg}$ is forced to remain suspended in a uniform electric field of $2.6 \times 10^4 \text{ V/m}$. The charge on the ball is: a) $3 \times 10^{-16} \text{ C}$ b) $3 \times 10^{-18} \text{ C}$ c) $3 \times 10^{-19} \text{ C}$ d) $3 \times 10^{-17} \text{ C}$	4

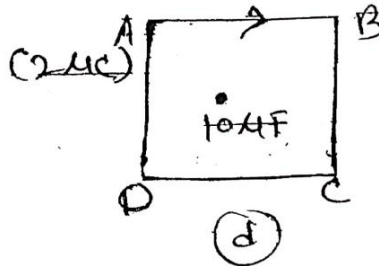
	<p>III) Electric potential due to a charged spherical shell (charge Q) of radius R for a point inside the shell ($r < R$) is</p> <p>a) Zero</p> <p>b) $\frac{KeQ}{r}$</p> <p>c) $\frac{KeQ}{R}$</p> <p>d) $\frac{Q}{R}$</p> <p>IV) The potential at a point located 9cm. away from a charge of $4 \times 10^{-7} \text{ C}$ is:</p> <p>a) $4 \times 10^6 \text{ V}$</p> <p>b) $4 \times 10^4 \text{ V}$</p> <p>c) $4 \times 10^8 \text{ V}$</p> <p>d) $4 \times 10^2 \text{ V}$</p>	
Q30.	<p><u>Case Study-II</u></p> <p>Whenever an electric current is passed through a conductor it becomes hot after sometimes. The phenomenon of the production of heat in a resistor by the flow of an electric current through it is called heating effect of current or joule heating, Does, the electric energy expended by the source entirely appears as heat But if the circuit has an active element like motor, then a part of energy supplied by the source goes to do useful work and the rest appears as heat joule's law of heating forms of the basis of various electrical appliances such as electric bulb, electric furnace, electric press etc.</p> <p>I) If the coil of a heater is cut to half, What would happen to heat produced?</p> <p>a) Doubled</p> <p>b) Halved</p> <p>c) Remains same</p> <p>d) Becomes four times</p> <p>II) A 25w and 100w are joined in series and connected to the mains which bulb will glow brighter?</p> <p>a) 100 w</p> <p>b) 25 w</p> <p>c) Both bulb will glow brighter</p> <p>d) None will glow brighter</p> <p>III) The heat emitted by a bulb of 100 w in 1 min is:</p> <p>a) 100 J</p> <p>b) 1000 J</p> <p>c) 600 J</p> <p>d) 6000 J</p> <p>IV) A rigid container with thermally insulated wall contains a coil of resistance 100Ω, carrying 1A, change in its internal energy after 5 min will be.</p> <p>a) 10 KJ</p> <p>b) 10 KJ</p> <p>c) 20 KJ</p> <p>d) 30 KJ</p>	4

SECTION – E

Q31.

- a) Explain the Gauss's Law with its applications.
 b) What is the work done in moving a $2\mu\text{C}$ point charge from corner A to corner B of a square ABCD figure, when a $10\mu\text{F}$ charge exists at the centre of the square?

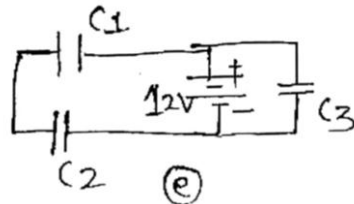
5



Q32.

- a) Three capacitance C_1 , C_2 and C_3 each of capacitance $6\mu\text{F}$, are connected to a 12V battery as shown in figure. Find:
 i) charge on each capacitor
 ii) equivalent capacitance of the network
 iii) Energy stored in the network of capacitors.

5

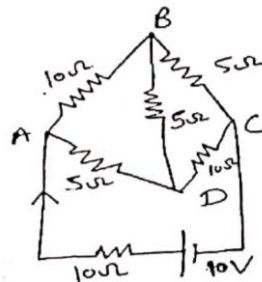


- b) Show that the capacitance of an isolated spherical conductor is numerically equal to its radius (in cgs units). Find its capacitance in SI Unit also.

Q33.

- a) Determine the current in each branch of the network shown in the figure.

5



Or

Explain Kirchhoff's Rules

- b) Battery of emf 12V and internal resistance 1Ω is connected to a network of resistors as shown below. Using Kirchhoff's laws, calculate the current through each branch of the circuit. The circuit diagram (assume): A battery of 12V is connected to a circuit with three resistors arranged in a triangle:
 - $R_1 = 2\Omega$ (between points A and B)
 - $R_2 = 3\Omega$ (between points B and C)
 - $R_3 = 4\Omega$ (between points C and A)
 The battery is connected between points A (positive terminal) and B (negative terminal).

Q6.	<p>Assertion (A): Rent paid to a partner is debited to a profit and loss account.</p> <p>Reason (R): Rent paid to a partner is an appropriation of profit.</p> <p>a) Both A and R are true and R is the correct explanation of A. b) Both A and R are true but R is not the correct explanation of A. c) A is true but R is false. d) A is false but R is true.</p>	1																									
Q7.	<p>Change in profit sharing ratio among partners results in:</p> <p>a) Gain of share in profit by partner. b) Both sacrifice of share in profit by one or more partners and Gain of share in profit by one or more partners. c) Gain of share in profit by one or more partners. d) Sacrifice of share in profit by one or more partners.</p>	1																									
Q8.	<p>Avya, Divya and Kavya were equal partners. They decided to change the profit sharing ratio to 4:3:2. For this purpose the goodwill of the firm was valued at 90,000.</p> <table border="1" data-bbox="295 840 1332 1176"> <thead> <tr> <th></th> <th>Particulars</th> <th>L.F.</th> <th>Debit Amount</th> <th>Credit Amount</th> </tr> </thead> <tbody> <tr> <td>a)</td> <td>Kavya's Capital A/c Dr. To Avya's Capital A./c</td> <td></td> <td>10,000</td> <td>10,000</td> </tr> <tr> <td>b)</td> <td>Divya's Capital A/c Dr. To Avya's Capital A/c</td> <td></td> <td>10,000</td> <td>10,000</td> </tr> <tr> <td>c)</td> <td>Avya's Capital A/c Dr. To Kavya's Capital A/c</td> <td></td> <td>90,000</td> <td>90,000</td> </tr> <tr> <td>d)</td> <td>Avya's Capital A/c Dr. To Kavya's Capital A/c</td> <td></td> <td>10,000</td> <td>10,000</td> </tr> </tbody> </table> <p>The journal entry for the treatment of goodwill on change in profit sharing ratio will be:</p> <p>a) Option (d) b) Option (b) c) Option (a) d) Option (c)</p>		Particulars	L.F.	Debit Amount	Credit Amount	a)	Kavya's Capital A/c Dr. To Avya's Capital A./c		10,000	10,000	b)	Divya's Capital A/c Dr. To Avya's Capital A/c		10,000	10,000	c)	Avya's Capital A/c Dr. To Kavya's Capital A/c		90,000	90,000	d)	Avya's Capital A/c Dr. To Kavya's Capital A/c		10,000	10,000	1
	Particulars	L.F.	Debit Amount	Credit Amount																							
a)	Kavya's Capital A/c Dr. To Avya's Capital A./c		10,000	10,000																							
b)	Divya's Capital A/c Dr. To Avya's Capital A/c		10,000	10,000																							
c)	Avya's Capital A/c Dr. To Kavya's Capital A/c		90,000	90,000																							
d)	Avya's Capital A/c Dr. To Kavya's Capital A/c		10,000	10,000																							
Q9.	<p>Manu, Sonu and Rahul were partners in a firm sharing profits and losses in the ratio of 4:3:2. With effect from 1 April, 2023, they decided to share profits and losses in the future in the ratio of 3: 2: 1. Their Balance Sheet showed Workmen Compensation Reserve of 84,000. The claim on account of Workmen Compensation is estimated at 75,000. The journal entry to give effect to the above transaction will be:</p> <table border="1" data-bbox="295 1758 1332 2087"> <thead> <tr> <th></th> <th>Date</th> <th>Particulars</th> <th>Debit Amount</th> <th>Credit Amount</th> </tr> </thead> <tbody> <tr> <td>a)</td> <td></td> <td>Workmen Compensation Reserve A/c Dr. To Workmen Compensation Claim A/c To Manu's Capital A/c To Sonu's Capital A/c To Rahul's Capital A/c</td> <td>84,000</td> <td>75,000 4,000 3,000 2,000</td> </tr> <tr> <td>b)</td> <td></td> <td>Workmen Compensation Reserve A/c Dr. To Workmen Compensation Claim A/c To Manu's Capital A/c</td> <td>84,000</td> <td>75,000 4,500</td> </tr> </tbody> </table>		Date	Particulars	Debit Amount	Credit Amount	a)		Workmen Compensation Reserve A/c Dr. To Workmen Compensation Claim A/c To Manu's Capital A/c To Sonu's Capital A/c To Rahul's Capital A/c	84,000	75,000 4,000 3,000 2,000	b)		Workmen Compensation Reserve A/c Dr. To Workmen Compensation Claim A/c To Manu's Capital A/c	84,000	75,000 4,500	1										
	Date	Particulars	Debit Amount	Credit Amount																							
a)		Workmen Compensation Reserve A/c Dr. To Workmen Compensation Claim A/c To Manu's Capital A/c To Sonu's Capital A/c To Rahul's Capital A/c	84,000	75,000 4,000 3,000 2,000																							
b)		Workmen Compensation Reserve A/c Dr. To Workmen Compensation Claim A/c To Manu's Capital A/c	84,000	75,000 4,500																							

		To Sonu's Capital A/c To Rahul's Capital A/c		3,000 1,500	
	c)	Manu's Capital A/c To Rahul's Capital A/c	Dr. 500	500	
	d)	Workmen Compensation Reserve A/c To Workmen Compensation Claim A/c To Manu's Capital A/c To Sonu's Capital A/c To Rahul's Capital A/c	Dr. 84,000	75,000 3,000 3,000 3,000	
	a) Option (a) b) Option (d) c) Option (b) d) Option (c)				
Q10.	In case of admission of a partner, the entry for unrecorded investments will be: a) Debit Investment A/c and Credit Revaluation A/c b) Debit Partners Capital A/cs and Credit Investments A/c c) Debit Revaluation A/c and Credit Investment A/c d) Debit Investment A/c and Credit Partners Capital A/c's				1
Q11.	A, B and C are partners sharing profits in ratio of 3: 2: 1. They agree to admit D into the firm. A, B and C agreed to give rd, th, th share of their profit. The share of profit of D will be: a) b) c) d)				1
Q12.	A and B are partners sharing profits in the ratio of 3: 2. C is admitted and new profit sharing ratio is agreed at 2:2:1. At the time of revaluation, it was found that, Stock was overvalued at 20,000 and salary outstanding was 5000. Revaluation Profit/loss distributed to the partner: a) Revaluation Gain A = 10000; B = 10000; C = 5000 b) Revaluation Gain A = 15000; B = 10000 c) Revaluation Loss A = 10000; B = 10000; C = 5000 d) Revaluation loss A = 15000; B = 10000				1
Q13.	S, B and J were partners in a firm. T was admitted as a partner in the partnership firm for th share of profits. Calculate the sacrificing ratio of S, B and J.				1
Q14.	Assertion (A): At the time of admission, if profit sharing ratio among old partners does not change then sacrificing ratio will be old profit sharing ratio. Reason (R): Old profit sharing ratio plus new profit sharing ratio is sacrificing ratio. a) Both A and R are true and R is the correct explanation of A. b) Both A and R are true but R is not the correct explanation of A. c) A is true but R is false. d) A is false but R is true.				1

Q15.	<p>Annual profit shown by a business is Rs. 20,000. The normal rate of return 10%. Total assets of the business firm Rs. 2,40,000 and liabilities Rs.80,000. Value of Goodwill will be:</p> <p>a) Rs. 40,000 b) No Goodwill of Business c) Rs. 20,000 d) Rs. 30,000</p>	1																										
Q16.	<p>X and Y are partners. They have provided following information on the admission of a new partner Z.</p> <ul style="list-style-type: none"> • Balance of capital account: Partner A = 50,000 and Partner B = 30,000 • Current account balance of partners: Partner A = 20,000 and Partner B = 10,000 • Reserves & Surplus = 40,000 • Goodwill (Given in Balance sheet) = 10,000 and Advertisement expense = 20,000 Capital employed of the firm: <p>a) 1,40,000 b) 1,30,000 c) 1,50,000 d) 1,20,000</p>	1																										
Q17.	How the goodwill is valued under the Capitalisation of Super Profit method?	1																										
Q18.	<p>A & B are partners in a firm sharing profit and loss in the ratio 3:1. They admit C for 1/4th share on 31st march 2014. Their extract of Balance Sheet was as follows:</p> <table border="1" data-bbox="295 1265 1332 1366"> <thead> <tr> <th>Liabilities</th> <th>Amount</th> <th>Asset</th> <th>Amount</th> </tr> </thead> <tbody> <tr> <td></td> <td></td> <td>Debtors</td> <td>50,000</td> </tr> <tr> <td></td> <td></td> <td>(-)PFBD</td> <td>2,000</td> </tr> <tr> <td></td> <td></td> <td></td> <td>48,000</td> </tr> </tbody> </table> <p>Additional Information Bad Debts amounted to Rs. 3000 On the basis of above information match the following:</p> <table border="1" data-bbox="295 1489 1332 1657"> <thead> <tr> <th>Column (A)</th> <th>Column (B)</th> </tr> </thead> <tbody> <tr> <td>a. Loss on revaluation</td> <td>i. 3000</td> </tr> <tr> <td>b. A's share in loss of revaluation.</td> <td>ii. 250</td> </tr> <tr> <td>c. PFBD in Balance Sheet</td> <td>iii. 1000</td> </tr> <tr> <td>d. B's share in loss of revaluation.</td> <td>iv. 750</td> </tr> </tbody> </table>	Liabilities	Amount	Asset	Amount			Debtors	50,000			(-)PFBD	2,000				48,000	Column (A)	Column (B)	a. Loss on revaluation	i. 3000	b. A's share in loss of revaluation.	ii. 250	c. PFBD in Balance Sheet	iii. 1000	d. B's share in loss of revaluation.	iv. 750	1
Liabilities	Amount	Asset	Amount																									
		Debtors	50,000																									
		(-)PFBD	2,000																									
			48,000																									
Column (A)	Column (B)																											
a. Loss on revaluation	i. 3000																											
b. A's share in loss of revaluation.	ii. 250																											
c. PFBD in Balance Sheet	iii. 1000																											
d. B's share in loss of revaluation.	iv. 750																											
Q19.	<p>Fill in the blanks:</p> <p>a) Profit and Loss Appropriation Account is an _____ of Profit and Loss Account.</p>	1																										
Q20.	<p>The Goodwill of firm 3,60,000 valued at three year's purchase of super profit. If capital employed is 4,00,000 and Normal rate of return is 10% per annum, the amount of average profit will be _____.</p>	1																										

Q21.	<p>Rakshit and Malik are partners in a firm sharing profits and losses in the ratio of 4: 1. On 1 April, 2021, their capitals were 1,20,000 and 80,000 respectively. On 1 December, 2021, they decided that the total capital of the firm should be 3,00,000 to be contributed by them in the ratio of 2: 1.</p> <p>According to the partnership deed, interest on capital is allowed to the partners @6% p.a.</p> <p>Calculate interest on capital to be allowed for the year ending 31 March, 2022.</p>	3
Q22.	<p>Calculate goodwill of a firm on the basis of three year' purchase of the weighted average profits of the last four years. The profit for the last four years were: 2012 20,200; 2013 24,800; 2014 20,000 and 2015 30,000. The weights assigned to each year are: 2012 1; 2013 2; 2014-3 and 2015-4.</p> <p>You are supplied the following information:</p> <ol style="list-style-type: none"> On September 1, 2014, a major plant repair was undertaken for 6,000, which was charged to revenue. The said sum is to be capitalized for goodwill calculation subject to adjustment of depreciation of 10% p.a. on reducing balance method. The Closing Stock for the year 2013 was overvalued by 2,400. To cover management costs an annual charge of 4,800 should be made for the purpose of goodwill valuation. 	3
Q23.	<p>Read the text carefully and answer the questions: X and Y are two partners in a firm sharing profit and losses in the ratio of 3: 2. At the time of distributing the net profit between the partners, interest on capital was credited 18% instead of 8% wrongly. Partners' capitals are given on 1st April 2018 as 5,00,000 and 3,00,000 respectively. Profit on 31st March 2019 is 2,00,000.</p> <ol style="list-style-type: none"> The excess interest on capital provided to X, which should be debited now is _____. <ol style="list-style-type: none"> 30,000 40,000 90,000 50,000 <ol style="list-style-type: none"> The excess interest on capital provided to Y, which should be debited now is _____. <ol style="list-style-type: none"> 50,000 54,000 30,000 24,000 <ol style="list-style-type: none"> The aggregate excess profit generated to distribute further is _____. <ol style="list-style-type: none"> 80,000 1,20,000 1,44,000 64,000 	3

Q24.	<p>Read the text carefully and answer the questions: Nisha and Sonali are partners since last 10 years. They are involved in manufacturing of Mobile phones. 80% of the profit is shared by Nisha and remaining 20% by Sonali. They admit a new partner Monni for share in profits. Following entries were passed at the time of admission of Monni.</p> <table border="1" data-bbox="295 403 1332 750"> <thead> <tr> <th>Date</th> <th>Particulars</th> <th>LF</th> <th>Debit</th> <th>Credit</th> </tr> </thead> <tbody> <tr> <td></td> <td>Cash A/c To Monni's Capital A/c To Premium for Goodwill A/c (Being capital and premium bought by new partner)</td> <td>Dr.</td> <td>3,50,000</td> <td>3,00,000 1,00,000</td> </tr> <tr> <td></td> <td>Premium for Goodwill A/c Sonali's Capital A/c To Nisha's Capital A/c (Being premium adjusted)</td> <td>Dr. Dr.</td> <td>1,00,000 40,000</td> <td>1,40,000</td> </tr> </tbody> </table> <p>From the above information, find out: 1. Total Goodwill of the firm: 2. Sacrifice/Gain of the partners: 3. New Profit Sharing Ratio</p>	Date	Particulars	LF	Debit	Credit		Cash A/c To Monni's Capital A/c To Premium for Goodwill A/c (Being capital and premium bought by new partner)	Dr.	3,50,000	3,00,000 1,00,000		Premium for Goodwill A/c Sonali's Capital A/c To Nisha's Capital A/c (Being premium adjusted)	Dr. Dr.	1,00,000 40,000	1,40,000	3
Date	Particulars	LF	Debit	Credit													
	Cash A/c To Monni's Capital A/c To Premium for Goodwill A/c (Being capital and premium bought by new partner)	Dr.	3,50,000	3,00,000 1,00,000													
	Premium for Goodwill A/c Sonali's Capital A/c To Nisha's Capital A/c (Being premium adjusted)	Dr. Dr.	1,00,000 40,000	1,40,000													
Q25.	<p>A and B are partners sharing profits in the ratio of 3: 2. On 1 April, 2022 their capitals were 5,00,000 and 3,00,000 respectively. A was in need of funds and hence took a loan of 1,00,000 from the firm on 1 July, 2022, agreed rate of interest being 12% p.a. Profit for the year ended 31 March, 2023 amounted to 1,50,000 before charging interest on loan to A. Pass Journal Entries for interest and prepare Partner's Capital Accounts.</p>	4															
Q26.	<p>Vaishali, Vinod and Anjali are partners sharing profits in the ratio of 4:3:2. From April 1, 2015; they decided to share the profits equally. On the date their book their books showed a credit balance of Rs. 3,60,000 in the profit and loss account and a balance of Rs. 90,000 in the General reserve. Record the journal entry for distribution of these profits and reserves.</p> <p style="text-align: center;">Or</p> <p>A, B and C were partners in a firm sharing profits and losses in the ratio of 7:1: 2. From 01.04.2022 they decided to share the profits in the ratio of 5:3:2. For this purpose the goodwill of the firm was valued at 3,60,000. Revaluation of assets and reassessment of liabilities resulted in a loss of 50,000. Calculate share of gain or loss of the individual partners on change in profit sharing ratio and pass necessary journal entries for the above in the books of the firm.</p>	4															

Q27.

Neha, Amit and Rajesh are partners sharing profits and losses in the ratio of 2: 2: 1. From 1 April, 2023, they decide to change the profit sharing ratio. They pass the following adjustment entry for goodwill in the books:

4

JOURNAL

Date	Particulars			LF	Debit	Credit
April 1 2023	Neha's $\left(200000 \times \frac{3}{25}\right)$	Current A/c	Dr.		24,000	
	Rajesh $\left(200000 \times \frac{2}{25}\right)$	Current A/c	Dr.		16,000	
	To Amit's Current A/c (Goodwill adjusted on change in profit sharing ratio)					40,000

What will be the new profit sharing ratio of partners assuming capital of partners are fixed?

Q28.

Anish and Shubham are partners in M/s Mega Enterprises. They admit Ashuas partner w.e.f. 1 April 2023. They agreed to value goodwill at 3 years purchase by Super Profit Method for which they decided to take an average of the last 5 years' profits. profits for the last five years were:

4

Year Ended	Rs.	
31.03.2019	2,00,000	(Including gain of Rs. 25,000 from the sale of fixed asset)
31.03.2020	1,70,000	(Including abnormal loss of Rs. 50,000)
31.03.2021	2,10,000	
31.03.2022	2,30,000	
31.03.2023	2,50,000	

Capital employed in the firm 15,00,000 and the normal rate of return in similar business is 10%.
Calculate the value of goodwill.

Q29.

Read the text carefully and answer the questions: Amit and Vinod are college mates after completion of their studies they started a business of manufacturing pickles. They are sharing profits in the ratio of 3:1. Their balance sheet as at 31st March 2020 was as follows.

Liabilities	Amount	Assets	Amount
Creditors	1,82,600	Land	3,30,000
Capital:		Furniture	49,000
Amit	3,52,000	Stock	2,64,000
Vinod	2,90,400	Debtors	70,000
		Bill Receivables	57,000
		Cash	55,000
	8,25,000		8,25,000

On this date Chandru was admitted into partnership for th share in profits. He brought Capital and goodwill premium in cash. At the time of admission of Chandru the firm revalued the assets and reassessed the liabilities and found the following.

- a) Stock was overvalued by 4,000
- b) Furniture is to be depreciated by 10% and Land to be appreciated by 20%. Provision for doubtful debts is to be created @ 5% on debtor
- c) Provision for damages is to be made at 3,000.

1) What will be the result of revaluation A/c?

- a) Gain on revaluation 68,400
- b) Gain on revaluation 66,000
- c) Gain on revaluation 50,600
- d) Gain on revaluation 48,600

2) What is the correct treatment entry of provision for damages?

a)	Revaluation A/c To Provision for damages A/c	Dr.	3,000	3,000
b)	Provision for damages A/c To Revaluation A/c	Dr.	3,000	3,000
c)	Liability A/c To Provision for damages	Dr.	3,000	3,000
d)	Liability A/c To Revaluation A/c	Dr.	3,000	3,000

3) What is the amount of stock will show in the new Balance Sheet?

- a) 2,60,000
- b) 2,68,000
- c) 2,72,000
- d) 2,64,000

4) What will be the new ratio?

4

Q30.	<p>Read the text carefully and answer the questions: A and B are partners sharing profits and losses in the ratio of 3:2. They agree to take C into partnership for 1/3rd share. For this purpose, goodwill is to be valued at two year's purchase of the average profit of last four years which were as follows:</p> <ul style="list-style-type: none"> • Year ending on 31st March 2018 = 4,00,000 • Year ending on 31st March 2019 = 5,00,000 • Year ending on 31st March 2020 = 6,00,000 • Year ending on 31st March 2021 = 7,00,000 <p>On a scrutiny of the accounts the following matters are revealed:</p> <ol style="list-style-type: none"> a) An abnormal loss of 50,000 was incurred during the year ended 31st March, 2018. b) An abnormal Gain of 50,000 was incurred during the year ended 31st March, 2020. c) Closing Stock as on 31st March 2019 was undervalued by 40,000. d) Repairs to Car amounting to 40,000 was wrongly debited to Car Account on 1st January, 2018. Depreciation was charged on Vehicles @ 10% p.a. on Straight Line Method. e) To cover management cost an annual charge of 4,800 should be made for the purpose of goodwill valuation. <ol style="list-style-type: none"> 1. Adjusted Profit for the year ended 31.03.2020 will be: 2. Adjusted Profit for the year ended 31.03.2019 will be: 3. Goodwill of the firm will be 4. Average Adjusted profit will be: 	4
Q31.	<p>Ram and Raja are in partnership since April 1, 2022. No Partnership agreement was made. They contributed 4,00,000 and 1,00,000 respectively as capital. In addition, Ram had given loan of 1,00,000 to the firm on October 01, 2022. Due to long illness, Ram could not participate in business activities from August 1 2022 to September 30, 2022. The profits for the year ended March 31, 2023, amounted to 1,80,000.</p> <p>Dispute has arisen between Ram and Raja.</p> <p>Ram Claims:</p> <ol style="list-style-type: none"> a) he should be given interest @ 10% per annum on capital and loan; b) Profit should be distributed in the proportion of capital; <p>Raja Claims:</p> <ol style="list-style-type: none"> a) Profits should be distributed equally; b) He should be allowed 2,000 p.m. as remuneration for the period he managed the business, in the absence of Ram; c) Interest on Capital and loan should be allowed @ 6% p.a. <p>You are required to settle the dispute between Ram and Raja. Also, prepare Profit and Loss Appropriation Account.</p>	6

Q32.

Ram and Gopal were partners in a firm sharing profits in the ratio of 3:2. On 1st January 2007, their fixed capital were Rs 100,000 and Rs 1,50,000 respectively. On 31 March, 2007 they decided that their total capital (fixed) should be Rs 3,00,000. It was further decided that the capital (fixed) should be in their profit sharing ratio. Accordingly, they introduced or withdrew the necessary capital. The partnership deed provided the following.

- a) Interest on capital @ 12% pa
- b) Interest on drawings @ 18% p.a.
- c) Monthly salary to Ram @ Rs 2,000 per month and to Gopal @ 3,000 per month.

The drawings of Ram and Gopal during the year were as follows:

Date	Ram	Gopal
July 1, 2007	10,000	12,000
September 30, 2007	15,000	12,000

The profit earned by the firm for the year ended 31st December, 2007 was Rs. 2,00,000. 10% of this profit was to be kept in a reserve. You are required to prepare

- a) Profit and loss appropriation account
- b) Capital of Ram and Gopal and
- c) Current account of Ram and Gopal

6

Q33.

Chetan and Neha were partners in a firm sharing profits and losses equally. On 31 March, 2022 their balance sheet was as follows.

**Balance Sheet
as an 31 March, 2022**

Liabilities	Amount	Assets	Amount
Sundry Creditors	1,04,000	Cash at Bank	30,000
Capital A/cs:		Bills Receivable	45,000
Chetan	2,50,000	Debtors	75,000
Neha	2,16,000	Furniture	1,10,000
		Land and Building	3,10,000
	5,70,000		5,70,000

On 1 April, 2022, they admitted Kavita as a new partner for rd share in the profits on the following conditions.

- a) Kavita will bring 3,00,000 as her capital and 50,000 as her share of goodwill premium, half of which will be withdrawn by Chetan and Neha.
- b) Debtors to the extent of 5,000 were unrecorded.
- c) Furniture will be reduced by 10% and 5% provision for bad and doubtful debts will be created on bills receivables and debtors.
- d) Value of land and building will be appreciated by 20%.
- e) There being a claim against the firm for damages, a liability to the extent of 8,000 will be created for the same.

Prepare revaluation account and partners' capital accounts.

6

Q34.	A and B are partners sharing profits and losses as 2:1. On 1st April, 2021 they admit C as a partner for th share who pays 4,50,000 as goodwill privately. On 1st April, 2022, they take D as a partner for th share who brings 4,00,000 as goodwill, out of which half is withdrawn by the existing partners. On 1st April, 2023, E is admitted as a partner for th share who brings 5,00,000 as goodwill which is retained in the business. Journalise the above transactions in the books of the firm.	6
------	--	---


SHARDEIN SCHOOL
UNIT-I EXAMINATION (2025-26)
CLASS – XII
SUBJECT : PHYSICAL EDUCATION

TIME : 03 HOURS

MM : 70

General Instructions: <i>a. All Questions are compulsory.</i>		
<u>SECTION – A</u>		
Q1.	The Committee responsible for liaison with Print media is the _____ Committee. a) Technical b) Logistics c) Finance d) Marketing	1
Q2.	If there are 19 teams playing in a knock-out tournament then how many byes will be given? a) 13 b) 10 c) 2 d) 5	1
Q3.	Which of this is not a function of sporting event management? a) Directing to members b) Selection of Staff c) Organising d) Creating a manager	1
Q4.	The competition in which teams from different schools participate is called _____. a) Intramural b) Tournament c) Sports Day d) Extramural	1
Q5.	First Deaflympic Games was organized in the year _____. a) 1924 b) 1960 c) 1896 d) 1951	1
Q6.	Which of the following asana is not used to cure obesity? a) Paschimottanasana b) Halasana c) Shavasana d) Pavanmuktasana	1

Q7.	Vajrasana should not be performed if an individual is suffering from a) Chronic Knee Pain b) Asthma c) Peptic Ulcer d) Hernia	1
Q8.	Sukhasana should be avoided in _____. a) Asthma b) Pregnancy c) Hypertension d) Knee problems	1
Q9.	In hypertension, the blood pressure a) Stays constant b) Is not related c) Falls d) Rises	1
Q10.	Which one of the following is not the corrective measure for Round shoulders? a) Dhanurasana b) Vajrasana c) Hanging on horizontal bars d) Chakrasana	1
Q11.	Which of the following is not a part of female athlete triad? a) Osteoporosis b) Menarche c) Anaemia d) Amenorrhoea	1
Q12.	In which stage of age, delayed puberty is considered. a) Childhood b) Teenage c) Adolescence d) Adulthood	1
Q13.	Weakening of bones due to loss of bone density and improper bone formation is a) Osteoporosis b) Anorexia Nervosa c) Lordosis d) Amenorrhoea	1
Q14.	Assertion (A): In ancient times Indian women had faced the negative attitude of society towards sports participation. Reason (R): We had a male dominating society. a) Both A and R are true and R is the correct explanation of A. b) Both A and R are true but R is not the correct explanation of A. c) A is true but R is false. d) A is false but R is true.	1

Q15.	<p>Assertion (A): Improper bone formation and low bone density are not the main causes of osteoporosis.</p> <p>Reason (R): Osteoporosis is a condition which can ruin a female athlete's career because it may lead to stress and fractures.</p> <p>a) Both A and R are true and R is the correct explanation of A. b) Both A and R are true but R is not the correct explanation of A. c) A is true but R is false. d) A is false but R is true.</p>	1
Q16.	<p>Rules and regulations of a sports tournament are the responsibility _____ of Committee.</p> <p>a) Marketing b) Logistics c) Technical d) Finance</p>	1
Q17.	<p>The head of a sports committee is _____ director.</p> <p>a) Entertainment b) Technical c) Security d) Administrative</p>	1
Q18.	<p>Identify the asana</p>  <p>a) Uttan Mandukasana b) Bhujangasana c) Gomukhasana d) Matyasana</p>	1
<u>SECTION – B</u>		
Q19.	Define knock out tournament.	2
Q20.	What are the causes of obesity?	2
Q21.	What do you understand by the Ardha Matsyendrasana?	2
Q22.	<p>Identify and write the name of the asanas that resemble the shape of</p> <p>a) Wheel b) Face of a cow c) Mountain d) Cobra</p>	2
Q23.	What are the common problems faced due to Osteoporosis?	2

SECTION – C

Q24.	Discuss any three importance of tournament.	3
Q25.	Explain the staircase method of league tournament and draw the fixture of 12 teams in staircase methods.	3
Q26.	Discuss the benefits and contraindications of Ardha Matsyendrasana.	3
Q27.	What are the basic movements of early childhood in a baby?	3
Q28.	Discuss about the female athlete triad.	3

SECTION – D

Q29. **Read the following text carefully and answer the questions that follow:** 4

As Mr. Kiren Rijuju, Sports Minister has ordered to popularize the game of Kabaddi among school students to develop their physical ability, Mr. Gopi, Physical Education Teacher of a reputed CBSE school has decided to conduct an Inter School Kabaddi tournament in his school premises after proper drawing of fixtures. He consulted the Management and the Principal to conduct the Tournament of Pro Kabaddi pattern but the PE teacher was not aware of pro Kabaddi Tournament. So he discussed with the National Kabaddi Referee Association.



1. Which is the best method to organize this kind of tournament?
 - a) League tournament
 - b) Knock out tournament
 - c) Round robin tournament
 - d) Group stage tournament

2. The Knock out tournament is also known as:
 - a) League tournament
 - b) Elimination tournament
 - c) Round robin tournament
 - d) Group stage tournament

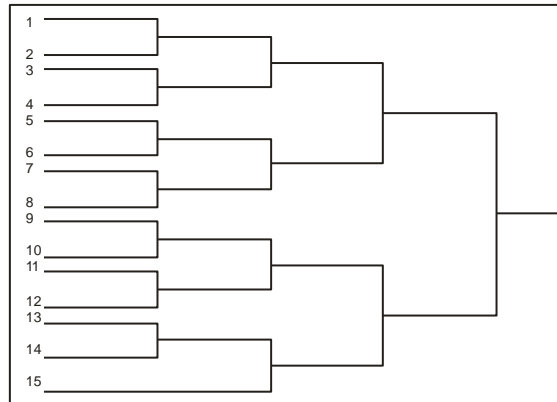
3. If 17 teams are participating in this tournament, how many teams will get bye?
 - a) 13
 - b) 15
 - c) 16
 - d) 17

4. The formula for calculating the number of matches in a knockout tournament is:
 a) $N/2$
 b) $N-1$
 c) $2N-1$
 d) $N+1$

Q30.

Study the figure given below:

4

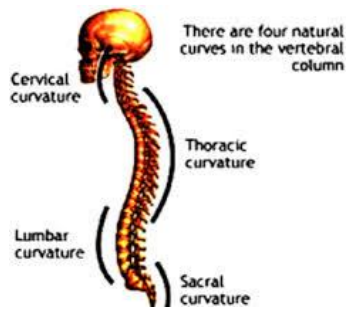


On the basis of the above study and your knowledge, answer the following questions:

- According to the above fixture total number of rounds will be _____.
- As shown in the fixture if the winner team plays least number of matches, then which number of team is the winner?
- What is the formula for calculating number of matches in a knockout tournament?
- If 16 teams are participating in a knockout tournament, then how many byes will be given to draw a knockout fixture?

Or

What is the formula for calculating total number of byes in a knockout tournament?

Q31.	<p>Read the following text carefully and answer the questions that follow:</p> <p>Physical Education teacher at XYZ School observed that Ravi a student of class VI has outward curve of vertebral column at Thoracic region. He suggested some exercises to rectify this problem.</p>  <p>There are four natural curves in the vertebral column</p> <p>Cervical curvature</p> <p>Thoracic curvature</p> <p>Lumbar curvature</p> <p>Sacral curvature</p> <ol style="list-style-type: none"> 1. What is this deformity known as? <ol style="list-style-type: none"> a) Lordosis b) Scoliosis c) Kyphosis d) Spinal curvature 2. Kyphosis is commonly known as: <ol style="list-style-type: none"> a) Round back b) Hunch back c) Scoliotic back d) Curved spine 3. Kyphosis is a deformity related to <ol style="list-style-type: none"> a) Pelvic region b) Vertebral column c) Femur bone d) Rib cage 4. Adolescents are the children in which age group? <ol style="list-style-type: none"> a) 10-12 years b) 19-22 years c) 13-18 years d) 23-25 years 	4
<u>SECTION – E</u>		
Q32.	Explain the role of various During competition committees.	5
Q33.	Ardhmatsynedrasana and Vajrasana help to reduce obesity. Discuss in detail.	5
Q34.	Explain Flat Foot and Knock Knees and also suggest corrective measures for both postural deformities.	5

SHARDEIN SCHOOL
UNIT-I EXAMINATION (2025-26)
CLASS – XII
SUBJECT : PAINTING

TIME : 02 HOURS

MM : 30

General Instructions:		
<p>a. Section A: Attempt all question. Each question will carry 1 mark. b. Section B: Attempt any 4 questions. Each question will carry 2½ marks. c. Section C: Attempt any 2 questions. Each question will carry 6 marks.</p>		
<u>SECTION – A</u>		
For Q.No. 1 & 2 There are two statements marked Assertion (A) and Reason (R). Mark your answer as per the codes provided below:		
Q1.	<p>Assertion (A) : The depiction of nature is symbolic in Rajsthani miniatures. Reason (R) : The flora and fauna are painted to show bhava expression.</p> <p>a) Both A and R are true and R is the correct explanation of A. b) Both A and R are true but R is not the correct explanation of A. c) A is true but R is false. d) A is false but R is true.</p>	1
Q2.	<p>Assertion (A) : This painting (Krishna with Gopis from Pahari School) is an illustration from the ‘Gita Govinda’ series by Jayadeva. Reason (R) : The green ornaments are the precious emeralds pasted on the finished painting.</p> <p>a) Both A and R are true and R is the correct explanation of A. b) Both A and R are true but R is not the correct explanation of A. c) A is true but R is false. d) A is false but R is true.</p>	1
Q3.	<p>Which two religions were Pal School and Western School based on?</p> <p>a) Hinduism and Christianity b) Buddhism and Jainism c) Hinduism and Buddhism d) Jainism and Islam</p>	1
Q4.	<p>What is the base material of the manuscript paintings found in Pal and Western Schools?</p> <p>a) Palm leaves b) Banana leaves c) Peepal leaves d) Tree bark</p>	1

Q5.	Udaipur, Deogarh and Nathdwara were the centres of which painting school? a) Mewar School b) Marwar School c) Dhundhar School d) Haroti School	1
Q6.	Which painting school became famous for its life size portraits made in realistic style? a) Mewar School b) Basholi School c) Jaipur School d) Kishangarh School	1
Q7.	Guler is a sub-school of which school of miniature painting? a) Rajasthani School b) Pahari School c) Mughal School d) Deccan School	1
Q8.	What type of topics were used during Basholi School? a) Tulinama b) Ragmala c) Arabian nights d) Shahnama	1

SECTION – B : SHORT QUESTIONS

Answer for these questions is expected in around 100 words.

Q1.	In this miniature painting, along with the decorative pattern of nature, there is a devotional depiction of the selfless love of Lord Shri Krishna and 'The Gopis'. All the Gopis are expressing their reverence and love in different ways. a) Identify the painting and artist name. b) Describe its artistic features in your own words.	2½
Q2.	In this painting, Nanda is seen leading on the bullock cart and is followed by another bullock cart. a) Identify and name of the painting. b) Describe its artistic features in your own words.	2½
Q3.	Nuruddin has ingeniously employed the device of soft undulating mound in the centre to divide the painting into two sections. It operates as a pictorial prop that transforms an urban setting into treeladen country side and vice versa. a) Identify the painting, sub-school and collection and appreciate in your own words.	2½
Q4.	Describe the painting of Rajasthani school which is also popularly known as "The Indian Monalisa."	2½
Q5.	Write the main features of Rajasthani School.	2½
Q6.	Write a short note on Pala School.	2½

SECTION – C : LONG QUESTIONS (Attempt any 2)

Answer for these questions is expected in around 200 words:

Q1.	Rajasthani School follows a tradition of making straight forward compositions with the figure/figures highlighted against a flat back ground. Identify the names and describe any two such paintings from your syllabus.	6
Q2.	Discuss the following points in detail through a critical article on the Pahari Miniature School. a) Origin and development of Pahari Painting School. b) Main painters of Pahari School. c) Salient features of the Pahari School.	6
Q3.	Write an essay on the origin and development, subject matter and characteristic features of Rajasthani School.	6

SHARDEIN SCHOOL
UNIT-I EXAMINATION (2025-26)
CLASS – XII
SUBJECT : BIOLOGY

TIME : 03 HOURS

MM : 70

General Instructions:

- a. All questions are compulsory.
- b. The question paper has five sections and 33 questions.
- c. Section-A has 16 questions of 1 mark each; Section-B has 5 questions of 2 marks each; Section-C has 7 questions of 3 marks each; Section- D has 2 case- based questions of 4 marks each; and Section-E has 3 questions of 5 marks each.
- d. There is no overall choice. However, internal choices have been provided in some questions.
- e. Wherever necessary, neat and properly labeled diagrams should be drawn.

SECTION – A

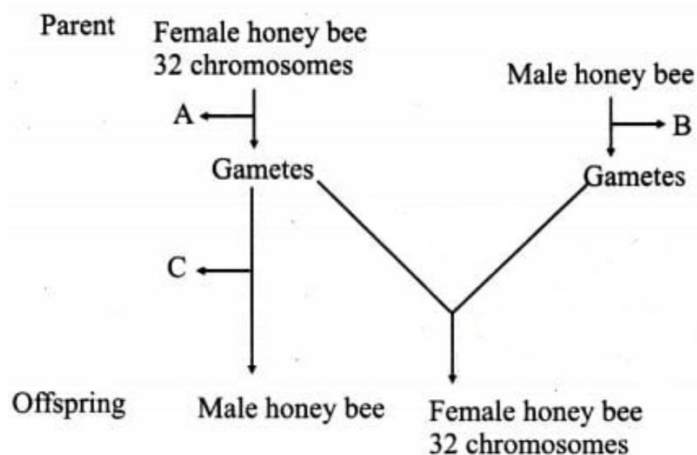
Q1.	The coconut water from tender coconut is a) Cellular endosperm b) free nuclear endosperm c) both cellular and nuclear endosperm d) free nuclear embryo	1
Q2.	A dicotyledonous plant bears flowers, but never produce fruits and seeds. The most probable cause for the above situation is a) plant is dioecious and bears only pistillate flowers. b) plants is dioecious and bears both pistillate and staminate flowers. c) plant is monoecious. d) plant is dioecious and bears only staminate flowers.	1
Q3.	A human ovum complete its second meiosis a) at the time of fertilization b) when the sperm touches the zona pallucida c) when the sperm gains entry into the cytoplasm of the ovum. d) when the acrosome of the sperm releases the enzymes on corona radiata.	1
Q4.	Mature Graafian follicle is generally present in the ovary of a healthy human female around a) 5-8 day of menstrual cycle b) 11-17 day of menstrual cycle c) 18-23 day of menstrual cycle d) 24-28 day of menstrual cycle	1
Q5.	The cells in the testis which Nourish the developing germ cells are a) Leydig cells b) Sertoli cells c) Spermatogonia d) All of these	1

Q6.	During embryonic development the limbs and digits are formed in the human foetus by the end of a) 15 days of pregnancy b) 30 days of pregnancy c) 45 days of pregnancy d) 60 days of pregnancy	1
Q7.	First polar body is produced during the transformation of a) oogonia into primary oocyte b) primary oocyte into secondary oocyte c) a secondary oocyte into an ootid d) an ootid into an ovum	1
Q8.	sexually transmitted diseases mentioned below, identify the one which does not specifically affect the sex organs. a) Syphilis b) AIDS c) Gonorrhoea d) Genital warts	1
Q9.	The mode of action of the copper ions in an IUD is to a) increase the movement of sperms b) decrease the movement of sperms. c) make the uterus unsuitable for implantation. d) make the cervix hostile to the sperms.	1
Q10.	A female undergoing IVF treatment has blocked fallopian tube. The technique by which the embryo with more than 8 blastomeres will be transferred into the female for further development is a) ZIFT b) GIFT c) IUT d) AI	1
Q11.	If a genetic disease is transferred from a phenotypically normal but carrier female to only some of the male progeny, the disease is a) autosomal dominant b) autosomal recessive c) sex-linked dominant d) sex-linked recessive.	1
Q12.	Which of the following combination of chromosome numbers represents the correct sex determination pattern in honey bees? a) male 32, female 16 b) male 16, female 32 c) male 31, female 32 d) female 32, male 31	1

	<p>Q. No. 13 to 16 consist of two statements-Assertion (A) and Reason (R). Answer these questions selecting the appropriate option given below:</p> <p>a) Both Assertion and Reason are true and Reason is the correct explanation of Assertion.</p> <p>b) Both Assertion and Reason are true and Reason is not the correct explanation of Assertion.</p> <p>c) Assertion is true but Reason is false.</p> <p>d) Assertion is false but Reason is true.</p>	1
Q13.	<p>Assertion: in birds, the type of ovum fertilized determines the sex of the offspring.</p> <p>Reason: In birds the female are heterogenetic and produce two types of ovum with reference to sex chromosomes.</p>	1
Q14.	<p>Assertion: Tubectogamy is a sterilization procedure advised for females as a terminal method.</p> <p>Reason: In tubectogamy a small part of the fallopian tube is removed or tied up blocking gamete transport thereby preventing conception:</p>	1
Q15.	<p>Assertion: Each seminiferous tubules is lined on its inner side by two types of cells.</p> <p>Reason: Spermatogonia and leydig cells are present in the inner lining of seminiferous tubules.</p>	
Q16.	<p>Assertion: In angiosperms flowers perform the function of sexual reproduction.</p> <p>Reason: In angiosperms flowers contain the main and female reproductive organs both in the same flower or in different flowers of the same plant or on different plants of the same species.</p>	1
<u>SECTION – B</u>		
Q17.	How many cells are present in the pollen grains at the time of their release from the anther? Name the cells.	2
Q18.	What happens to the Corpus luteum if the ovum is fertilized and not fertilized?	2
Q19.	An infertile couple is advised to adopt test- tube baby programme Describe to principles procedures adopted for such technologies.	2
Q20.	How do copper and hormone releasing IUDs act as contraceptives? Explain.	2
Q21.	How does a test cross help to determine the genotype of an individual?	2

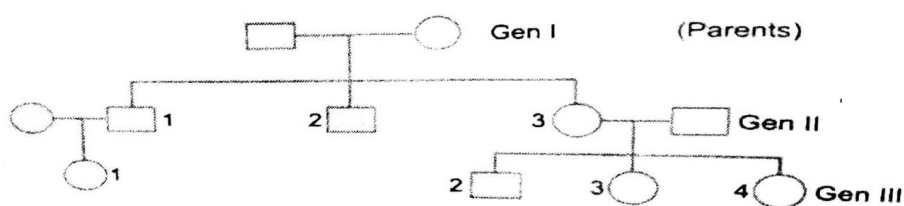
SECTION – C

Q22. The cytological observations made in a number of insects led to the development of the concept of genetic or chromosomal basis of sex determination mechanism. Honey bee is an interesting example to study the mechanism of sex-determination. Study the schermatic cross between the male and the female honey bees given below and answer the questions that follow:



- Identify the cell divisions A and B that lead to gamete formation in female and male honey bees respectively.
- Name the process C that leads to the development of male Honey Bee(drone)

Q23. Study the given below Pedigree chart and answer the questions that follow.



- is the trait given in the chart dominant or recessive ?Give reason in support your answer.
- is this trait autosomal or sex linked. Give reason in support your answer.
- write the possible genotypes of the children number 1 and 3 of the second generation

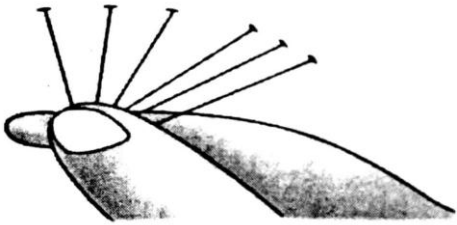

Q24. Explain the zygote intra-fallopian transfer technique. How is intra-uterine transfer technique different from it?

Or

With in what age group sexually transmitted diseases are reported to be very high. Mention three practices to avoid them.

Q25.	Construct a flow chart exhibiting sequential events of Spermatogenesis.	
Q26.	Write the specific location and the functions of the following cells in human males. a) Leydig cells b) Sertoli cells c) Primary spermatocyte.	3
Q27.	Draw a longitudinal section of the pistil from a flowering plant, where pollination has occurred. Label the following: a) Stigma showing germinating pollen grains b) Pollen tube reaching the micropyle of the ovule c) components of the egg apparatus d) Embryo sac	3
Q28.	Make a list of any three out breeding devices that flowering plants have developed and explain how they help to encourage cross pollination. Or Where are the following structures present in the male gametophyte of an angiosperm? Mention the function of each one of them. a) Germ pore b) Sporopollenin and c) Generative cell	3

SECTION – D

	Q.no 29 and 30 are case based questions. Each question has subparts with internal choice in one subpart.	
Q29.	<p>Read the following passage and answer the questions that follow:</p> <p>An effective and popular method of birth control is the use of Intra-uterine devices (IUDs). These devices are inserted by qualified doctors or expert nurses in the uterus.</p> <p>The picture given below shows an IUD and another contraceptive device. Answer the questions that follow:</p> <div style="display: flex; justify-content: space-around; align-items: center;">   </div> <p style="text-align: center;">A B</p> <p>a) Name the type of contraceptive device shown in A. b) What do they contain to act as a contraceptive? c) How do they effect contraception?</p> <p style="text-align: center;">Or</p> <p>Identify the IUD shown in B. Mention its mode of action as a contraceptive device. Give one other example of the same category.</p>	4

Q30.	<p>Mendel's work remained unrecognised for several years. Later, three scientists independently rediscovered mendel's results Also by this time, due to advancement in microscopy, scientists were able to carefully observe cell division. The chromosome movement during meiosis had been worked out.</p> <p>Answer the following questions:</p> <ol style="list-style-type: none"> Name the scientists who proposed the chromosomal theory of inheritance. Who provided experimental evidence for the chromosomal theory of inheritance? Write the scientific name of the organism, he worked on. Name the scientists who discovered mendel's results Mention the year in which they did it. <p style="text-align: center;">Or</p> <p>Give reasons why mendel's work remained unrecognised for a long time.</p>	4
<u>SECTION – E</u>		
Q31.	<ol style="list-style-type: none"> Where is microsporangium located in an angiosperm? State the functions of tapetum and the other three layers of microsporangium? Describe the structure of the male gametophyte produced as a result of microsporogenesis. State the functions of each part of the male gametophyte. 	5
Q32.	<ol style="list-style-type: none"> Draw a sectional view of a human ovary and label primary follicle, tertiary follicle, graafian follicle and Corpus luteum in it. Name the gonadotropins and explain their role in oogenesis and the release of ova 	5
Q33.	<ol style="list-style-type: none"> Why are thalassaemia and hemophilia categorized as Mendelian disorders? Write the symptoms of the diseases. Explain their pattern of inheritance in humans. Write the genotypes of the normal parents producing a hemophilic son. <p style="text-align: center;">Or</p> <p>You are given a tall pea plant and asked to determine its genotype. Name and explain the cross that you will carry out to find the possible genotype of the given tall pea plant.</p>	5

SHARDEIN SCHOOL
UNIT-I EXAMINATION (2025-26)
CLASS – XII
SUBJECT : ECONOMICS

TIME : 3 HOURS

MM : 80

General Instructions:

- a. This question paper contains two sections:
Section A – Macro Economics
Section B – Indian Economic Development
- b. This paper contains 20 Multiple Choice Questions of 1 mark each.
- c. This paper contains 4 Short Answer Questions of 3 marks each to be answered in 60 to 80 words.
- d. This paper contains 6 Short Answer Questions of 4 marks each to be answered in 80 to 100 words.
- e. This paper contains 4 Long Answer Questions of 6 marks each to be answered in 100 to 150 words.

SECTION – A

Q1.	Which of the following is not a factor payment? a) free uniform to defence personnel b) salaries to the members of the parliament c) rent paid to the owner of a building d) scholarship given to the students	1
Q2.	When Nominal gross domestic product is Rs. 6600cr and price index is Rs. 110, then real gross domestic product is _____.	1
Q3.	To reduce credit availability in the economy Central Bank may a) buy securities in the open market b) sell securities in the open market c) reduce reserve ratio d) reduce repo rate	1
Q4.	"Mr Sahotra borrowed funds from bank for purchasing a new house." From statement identify the indicated function of money: a) Medium of exchange b) Store of value c) Unit of account d) Standard of deferred payment	1
Q5.	Suppose money created by the banking system is Rs. 1000 and primary deposit is Rs. 250 the respective values of deposit multiplier and reserve ratio would be _____ & _____. a) 4, 25% b) 8, 12.5% c) 4, 12.5% d) 5, 20%	1

Q6.	<p>Read the following statements: Assertion(A) and Reason (R). Choose the correct alternative among the given below:</p> <ul style="list-style-type: none"> a) Both Assertion (A) and Reason (R) are true, and Reason (R) is the correct explanation of Assertion (A). b) Both Assertion (A) and Reason (R) are true, and Reason (R) is not the correct explanation of Assertion (A). c) Assertion (A) is true, but Reason (R) is false. d) Assertion (A) is false, but Reason (R) is true. <p>Assertion(A): Operating Surplus does not arise in the general government sector.</p> <p>Reason (R): General Government produces goods and services with the aim of earning profit without any intention of social welfare.</p>	1
Q7.	<p>Read the following statements and choose the correct alternative among those given below:</p> <ul style="list-style-type: none"> a) Both the statements are true. b) Both the statements are false. c) Statement 1 is true and Statement 2 is false. d) Statement 2 is true and statement 1 is false. <p>Statement 1. Cash reserve ratio (CRR) and statutory liquidity ratio (SLR) are one and the same thing.</p> <p>Statement 2: In CRR, Commercial Banks keep reserves with themselves, while in case of SLR, Commercial Banks keep reserve with RBI.</p>	1
Q8.	<p>Read the following statements: Assertion(A) and Reason (R). Choose the correct alternative among the given below:</p> <ul style="list-style-type: none"> a) Both Assertion (A) and Reason (R) are true, and Reason (R) is the correct explanation of Assertion (A). b) Both Assertion (A) and Reason (R) are true, and Reason (R) is not the correct explanation of Assertion (A). c) Assertion (A) is true, but Reason (R) is false. d) Assertion (A) is false, but Reason (R) is true. <p>Assertion(A): Bank Money is a Non-Legal Money.</p> <p>Reason (R): Bank Money can be refused by any citizen of the country for settlement of a financial transaction.</p>	1
Q9.	<p>Market price will be equal to Factor Cost when</p> <ul style="list-style-type: none"> a) Indirect Taxes are zero b) Indirect Taxes are equal to subsidies c) No Indirect tax and no subsidies d) Both (b) and (c) 	1

Q10.	<p>Read the following statements and choose the correct alternative among those given below:</p> <p>a) Both the statements are true b) Both the statements are false c) Statement 1 is true and Statement 2 is false d) Statement 2 is true and statement 1 is false.</p> <p>Statement 1: A Person can be a citizen of one country and at the same time a resident of another country. Statement 2: National Product includes production activities of units located within domestic territory, operated both by residents and non residents.</p>	1
Q11.	Explain "difficulty in storing wealth" problem faced in the barter system of exchange.	3
Q12.	<p>Covid vaccine to be free for 'most prioritised" beneficiaries: Vardhan 3cr Frontline & Health Workers Part of List. Does the given statement mean that welfare of such beneficiaries will increase along with increase in its GDP? Comment.</p>	3
Q13.	<p>Differentiate between Final and Intermediate Goods. Or Differentiate between Net exports and Net Factor Income from Abroad</p>	4
Q14.	<p>Read the following news report and answer questions (i) (iv) on the basis of the same: RBI may Cut Reverse Repo to Push Credit Flow. The Reserve Bank of India (RBI) could prioritise measures to step up credit flows, like reducing the rate on reverse repurchases and nudging banks to lend, instead of tinkering with the headline policy rate after the US Federal Reserve raised concerns about a prolonged delay in global economic recovery. Therefore, Mint Road may not change the policy repo rate but reduce the reverse repo to prompt high-street banks to lend to companies, showed a survey conducted by ET among 22 market participants.</p> <p style="text-align: right;">The Economic Times</p> <p>a) Reduction in reverse repo rate by RBI is likely _____ to the money supply in the economy. a. Increase b. decrease c. not change d. multiply</p> <p>b) Reverse repo rate is the exact opposite of _____ rate. a. Repo b. Bank c. Both (a) & (b) d. none</p>	4

	<p>c) Decrease in reverse repo rate has _____ effect on the lending capability of the commercial banks.</p> <p>a. Negative b. positive c. no d. negligible.</p> <p>d) Reverse repo rate is the rate at which _____ park their surplus funds with _____.</p> <p>a. Central Bank, commercial bank b. Commercial banks, Central Bank c. Government, commercial d. Central Bank, Government</p>																																					
Q15.	<p>“Households and firm depend on each other in the circular flow of income. Justify the statement in case of a two-sector model.</p> <p style="text-align: center;">Or</p> <p>What is meant by “money supply”? Discuss in brief the various constituents of money supply.</p>	4																																				
Q16.	<p>a) From the following data, Calculate a) Value of output b) Intermediate Consumption c) Net value added at factor cost</p> <table border="1" style="margin-left: auto; margin-right: auto;"> <thead> <tr> <th></th> <th>Particulars</th> <th>Rs. in Crore</th> </tr> </thead> <tbody> <tr> <td>i.</td> <td>Purchase of raw materials</td> <td>400</td> </tr> <tr> <td>ii.</td> <td>Increase in the unsold stock</td> <td>60</td> </tr> <tr> <td>iii.</td> <td>Import of raw material</td> <td>120</td> </tr> <tr> <td>iv.</td> <td>Domestic sales</td> <td>1200</td> </tr> <tr> <td>v.</td> <td>Replacement of fixed capital</td> <td>50</td> </tr> <tr> <td>vi.</td> <td>Power Charges</td> <td>20</td> </tr> <tr> <td>vii.</td> <td>Exports</td> <td>200</td> </tr> <tr> <td>viii.</td> <td>Import of machinery</td> <td>40</td> </tr> <tr> <td>ix.</td> <td>Goods and Service Tax (GST)</td> <td>10</td> </tr> <tr> <td>x.</td> <td>Subsidy</td> <td>30</td> </tr> <tr> <td>xi.</td> <td>Goods used for self consumption</td> <td>10</td> </tr> </tbody> </table> <p>b) Difference between national product and domestic product.</p>		Particulars	Rs. in Crore	i.	Purchase of raw materials	400	ii.	Increase in the unsold stock	60	iii.	Import of raw material	120	iv.	Domestic sales	1200	v.	Replacement of fixed capital	50	vi.	Power Charges	20	vii.	Exports	200	viii.	Import of machinery	40	ix.	Goods and Service Tax (GST)	10	x.	Subsidy	30	xi.	Goods used for self consumption	10	6
	Particulars	Rs. in Crore																																				
i.	Purchase of raw materials	400																																				
ii.	Increase in the unsold stock	60																																				
iii.	Import of raw material	120																																				
iv.	Domestic sales	1200																																				
v.	Replacement of fixed capital	50																																				
vi.	Power Charges	20																																				
vii.	Exports	200																																				
viii.	Import of machinery	40																																				
ix.	Goods and Service Tax (GST)	10																																				
x.	Subsidy	30																																				
xi.	Goods used for self consumption	10																																				
Q17.	<p>a) Money multiplier plays a vital role in determining the credit creation power of the banking system. Elaborate the statement with a suitable numerical example.</p> <p>b) Write the precautions of income method while estimating National Income.</p>	6																																				
<u>SECTION – B</u>																																						
Q18.	<p>Which sector was the backbone of India's economy on the eve of independence?</p> <p>a) Industrial sector b) Agricultural sector c) Foreign trade d) Services sector</p>	1																																				

Q19.	The major occupation of the Indian population during British rule was: a) Trading b) Manufacturing c) Agriculture d) Service	1
Q20.	Which of the following best describes the condition of Indian industries before independence? a) Highly developed b) Mechanized and modern c) Restricted and underdeveloped d) Export-oriented	1
Q21.	Which country was the largest trading partner of British India? a) USA b) China c) England d) France	1
Q22.	One of the major negative impacts of British policies on Indian agriculture was: a) Rise in agricultural productivity b) Commercialisation of crops c) Green Revolution d) Mechanisation of farming	1
	Read the following statements carefully and choose the correct option:	
Q24.	Assertion (A): Indian economy was stagnant and backward at the time of independence. Reason (R): British policies focused on the development of Indian industries. Options: a) Both A and R are true, and R is the correct explanation of A. b) Both A and R are true, but R is not the correct explanation of A. c) A is true, but R is false. d) A is false, but R is true.	1
Q25.	Assertion (A): Indian handicrafts declined under British rule. Reason (R): British policies favored import of cheap machine-made goods.	1
Q26.	Assertion (A): There was regional variation in the development of infrastructure in British India. Reason (R): British developed infrastructure mainly for their own economic interest.	1

Q27.	<p>Read the statements and answer the questions that follow.</p> <p>Statement 1: India's demographic profile at the time of independence reflected low literacy and high mortality.</p> <p>Statement II: These demographic indicators were a result of strong public health and education policies under British rule.</p> <p>Which of the following is correct?</p> <p>a) Both statements are true. b) Both statements are false. c) Statement 1 is true and statement 2 is false. d) Statement 2 is true and statement 1 is false.</p>	1
Q28.	How did commercialisation of agriculture resulted in famines?	3
Q29.	Decline of handicraft industry adversely affected the Indian economy. Comment.	3
Q30.	Write a short note on drain of India's wealth during the british rule.	4
Q31.	Comment upon two Salient features of demographic conditions of India on the eve of Independence.	4
Q32.	<p>Explain the terms:-</p> <p>a) Amputated economy b) Depreciated economy</p>	4
Q33.	<p>a) "India became exporter of primary products and importer of finished goods during the british rule. "comment".</p> <p>b) Explain the terms: life expectancy and high infant mortality rate during colonial period.</p>	6
Q34.	Explain positive contribution of british rule?	6

SHARDEIN SCHOOL
UNIT-I EXAMINATION (2025-26)
CLASS – XII
SUBJECT : MATHEMATICS (APPLIED)

TIME : 03 HOURS

MM : 80

General Instructions:

- a. This question paper comprises five sections A, B, C, D and E. Each section is compulsory
- b. Section A consists of 18 MCQ's with two assertion reasons of 1 mark each.
- c. Section B consists of 5 very short questions of 2 marks each.
- d. Section C consists of 6 short questions of 3 marks each.
- e. Section D consists of 4 long questions of 5 marks each.
- f. Section E consists of three case study based assessment of (4 marks each) with three sub parts.

SECTION – A

Q1.	In a 1 km race, player P beats player Q by 18 metres of 9 seconds. What is P's time to complete the race? n) 512 Seconds o) 502 Seconds c) 491 Seconds d) 481 Seconds	1
Q2.	If $x > y$ and $z < 0$, then a) $xz > yz$ b) $xz \geq yz$ c) $\frac{x}{z} > \frac{y}{z}$ d) $\frac{x}{z} < \frac{y}{z}$	1
Q3.	If $AB = A$ and $BA = B$, then $(B^2 + B)$ equals: a) $2A$ b) 0 c) $2I$ d) $2B$	1
Q4.	The graph of the inequation $2x+3y>6$ is the: a) entire XOY-plane b) half-plane that contains the origin c) half-plane that neither contains the origin nor the points on the line $2x+3y=6$ d) whole XOY-plane excluding the points on the line $2x+3y=6$	1
Q5.	The last (unit) digit of $(22)^{12}$ is: a) 2 b) 4 c) 6 d) 8	1
Q6.	The least non-negative remainder, when 3^{15} is divided by 7 is a) 1 b) 5 c) 6 d) 7	1

Q15.	Given that A is a square matrix of order 3 and $ A = -4$, then $ \text{adj}A $ is equal to a) -4 b) 4 c) -16 d) 16	1
Q16.	A and B are square matrices each of order 3 such that $ A = -1$ and $ B = 3$. What is the value of $ 3AB $? a) -9 b) -18 c) -27 d) -81	1
Q17.	$[(3 \times 7) + 5] \pmod{4}$ is a) 5 b) 4 c) 3 d) 2	1
Q18.	For any two matrices A and B, we have a) $AB = BA$ b) $AB \neq BA$ c) $AB = O$ d) None of the above	1
	Directions : In the question number 19 and 20, a statement of Assertion (A) is followed by a statement Reason (R). Choose the correct option as: e) Both A and R are true and R is the correct explanation of A. f) Both A and R are true but R is not the correct explanation of A. g) A is true but R is false. h) A is false but R is true.	
Q19.	Assertion (A) : $ x - 5 < 2x \in \mathbb{R}$ then $x \in [3, 7]$. Reason (R) : $ x < a$, iff $-a < x < a$	1
Q20.	Assertion (A) : If the determinant of a matrix is non-zero, then it has an inverse. Reason (R) : A matrix with non-zero determinant is non-singular.	1
<u>SECTION – B</u>		
Q21.	Using matrix method solve the following system of equations. $5x + 2y = 4$ $7x + 3y = 5$	2
Q22.	The longest side of a triangle is 3 times the shortest side and the third side is 2 cm shorter than the longest side. If the perimeter of the triangle is at least 61cm, find the minimum length of the shortest side.	2
Q23.	If A, B are symmetric matrices of same order, prove that $AB - BA$ is a skew symmetric matrix.	2
Q24.	Two pipes A and B together can fill a tank in 10 minutes. If pipe A takes 15 minutes less than B to fill the tank alone, then find the time taken by pipe B to fill the tank alone.	2

Q25.	A boat covers 32 km upstream and 36 km downstream in 7 hours. Also it covers 40 km upstream and 48 km downstream in 9 hours. Find the speed of the boat in still water and that of stream.	2
<u>SECTION – C</u>		
Q26.	If for matrix A it is given $A^2 = kA$ then find the value of k. $\begin{bmatrix} 1 & -1 \\ -1 & 1 \end{bmatrix}$	3
Q27.	Two pipes A and B can fill a tank in 24 minutes and 32 minutes respectively. If both the pipes are opened simultaneously, after how much time should B be closed so that the tank is full in 18 minutes?	3
Q28.	Solve for x: $\frac{(x+3)}{(x-2)} \leq 2$	3
Q29.	Solve the following system of equations by Cramer's rule: $2x - y = 17, \quad 3x + 5y = 6$	3
Q30.	Determine the integral value(s) of x for which the matrix A is singular $A = \begin{bmatrix} x+1 & -3 & 4 \\ -5 & x+2 & 2 \\ 4 & 1 & x-6 \end{bmatrix}$	3
Q31.	In a one-kilometre race, A beats B by 30 seconds and B beats C by 15 seconds. If A beats C by 180 metres, then find the time taken by A to run 1 kilometre.	3
<u>SECTION – D</u>		
Q32.	Find the inverse of the matrix: $A = \begin{bmatrix} -1 & 1 & 2 \\ 3 & -1 & 1 \\ -1 & 3 & 4 \end{bmatrix}$ and hence show that $AA^{-1} = I$.	4
Q33.	Express the following matrix as the sum of a symmetric a skew symmetric matrix. $A = \begin{bmatrix} 3 & 5 \\ 1 & -1 \end{bmatrix}$	4
Q34.	If $A = \begin{bmatrix} 2 & 0 & 1 \\ 2 & 1 & 3 \\ 1 & -1 & 0 \end{bmatrix}$ then $A^2 - 5A + 4I$ and hence find a matrix X such that $A^2 - 5A + 4I + X = 0$	4

Q35.	A bottle is full of Dettol. One-third of its Dettol is taken away and an equal amount of water is poured into the bottle to fill it again. This operation is repeated three times. Find the final ratio of Dettol to water in the bottle.	4
<u>SECTION – E</u>		
Q36.	<p><u>Case Study – I</u></p> <p>In a city there are two factories A and B. Each factory produces sports clothes for boys and girls. There are three types of clothes produced in both the factories, type I, II and III. For boys the number of units of types I, II and III respectively are 80, 70 and 65 in factory A and 85, 65 and 72 are in factory B. For girls the number of units of types I, II and III respectively are 80, 75 and 90 in factory A and 50, 55, 80 are in factory B.</p> <p>Based on the above information, answer the following questions.</p> <ol style="list-style-type: none"> If P represents the matrix of number of units of each type produced by factory A for both boy and girls, then write the matrix P. Let R be a 3 x 2 matrix that represent the total production of sports clothes of each type for boys and girls, then find the transpose of R. If Q represents the matrix of number of units of each type produced by factory B for both boys and girls, then write the matrix B? 	4
Q37.	<p><u>Case Study – II</u></p> <p>The management committee of a residential colony decided to award some of its members (say x) for honesty, some (say y) for helping others and some others (say z) for supervising the workers to kept the colony neat and clean. The sum of all the awardees is 12. Three times the sum of awardees for cooperation and supervision added to two times the number of awardees for honesty is 33. The sum of the number of awardees for honesty and supervision is twice the number of awardees for helping.</p> <p>Based on the above information, answer the following questions.</p> <ol style="list-style-type: none"> Write the linear equations. Write the given situation in the form $AX = B$ and find A. Find the value of x, y and z using adjoint and inverse. 	4
Q38.	<p><u>Case Study – III</u></p> <p>A transport company operates ferry boats to move goods and passengers across a river. The river has a current flowing downstream at a constant speed. The ferry boats can travel in still water at 15 km/hr. However, due to the current, their actual speed varies when moving upstream or downstream. Recently, the company started a new route between points A and B on opposite banks of the river. The straight-line distance between A and B is 24 km.</p>	4

Read the following information and answer the questions below:

Speed of boat in still water = 15 km/hr

Speed of river current = 3 km/hr

Distance from A to B = 24 km

The boat first travel downstream from A to B and then returns upstream from B to A.

- a) What is the effective speed of the boat when it is going downstream from A to B?
- b) What is the effective speed of the boat when going upstream from B to A?
- c) What is the total time taken for the round trip from A to B and back?

SHARDEIN SCHOOL
UNIT-I EXAMINATION (2025-26)
CLASS – XII
SUBJECT : MATHEMATICS (CORE)

TIME : 03 HOURS

MM : 80

General Instructions:

- a. This question paper comprises five sections A, B, C, D and E. Each section is compulsory.
- b. Section - A consists of 18 MCQ's with two assertion reasons of 1 mark each.
- c. Section - B consists of 5 very short questions of 2 marks each.
- d. Section - C consists of 6 short questions of 3 marks each.
- e. Section - D consists of 4 long questions of 5 marks each.
- f. Section - E consists of three case study based assessment of 4 marks each with three sub-parts.

SECTION – A

Q1.	Let $f : \mathbb{R} \leftarrow \mathbb{R}$ be defined by $f(x) = 1/x \forall, x \in \mathbb{R}$. Then f is a) one-one b) onto c) bijective d) f is not defined	1
Q2.	Let $A = \{1,2,3\}$ and consider the relation $R = \{(1, 1), (2, 2), (3, 3), (1, 2), (2, 3), (1, 3)\}$. Then R is a) reflexive, transitive but not symmetric b) reflexive but not transitive c) symmetric and transitive d) neither symmetric, nor transitive	1
Q3.	The function $f : A \rightarrow B$ defined by $f(x) = 4x + 7, x \in \mathbb{R}$ is a) one-one b) many-one c) odd d) even	1
Q4.	The principal value of $\tan^{-1}\left(\tan\frac{3\pi}{5}\right)$ is a) $\frac{2\pi}{5}$ b) $\frac{-2\pi}{5}$ c) $\frac{3\pi}{5}$ d) $\frac{-3\pi}{5}$	1
Q5.	$\sin\left[\frac{\pi}{3} - \sin^{-1}\left(\frac{-1}{2}\right)\right]$ is equal to: a) $\frac{1}{2}$ b) $\frac{1}{3}$ c) -1 d) 1	1

Q6.	If A is a square matrix such that $A^2=A$, then $(I-A)^3+A$ is equal to a) I b) 0 c) $I - A$ d) $I + A$	1
Q7.	Total number of possible matrices of order 3×3 with each entry 2 or 0 is a) 9 b) 27 c) 81 d) 512	1
Q8.	If A and B are two matrices of the order $3 \times m$ and $3 \times n$, respectively and $m = n$, then the order of matrix $(5A - 2B)$ is a) $m \times 3$ b) 3×3 c) $m \times n$ d) $3 \times n$	1
Q9.	If A is a skew-symmetric matrix, then A^2 is a a) Skew symmetric matrix b) Symmetric matrix c) Null matrix d) Cannot be determined	1
Q10.	If A is a square matrix of order 3 and $ A = 5$, then the value of $ 2A $ is a) -10 b) 10 c) -40 d) 40	1
Q11.	The area of a triangle with vertices $(-3, 0)$, $(3, 0)$ and $(0, k)$ is 9 sq. units. The value of k will be a) 9 b) 3 c) -9 d) 6	1
Q12.	Given that A is a square matrix of order 3 and $ A = -4$, then $ \text{adj}A $ is equal to a) -4 b) 4 c) -16 d) 16	1
Q13.	Which of the following is correct? a) Determinant is a square matrix. b) Determinant is a number associated with a matrix. c) Determinant is a number associated with a square matrix. d) None of these	1
Q14.	If A is an invertible matrix of order 2, then $\det(A^{-1})$ is equal to a) $\det(A)$ b) $1/\det(A)$ c) 1 d) 0	1
Q15.	If the points $(3, -2)$, $(x, 2)$, $(8, 8)$ are collinear, then find the value of x. a) 2 b) 3 c) 4 d) 5	1
Q16.	Find the area of the triangle with vertices $P(4, 5)$, $Q(4, -2)$ and $R(-6, 2)$. a) 21 sq. units b) 35 sq. units c) 30 sq. units d) 40 sq. units	1

Q17.	If for the non-singular matrix A, $A^2=I$, then find A^{-1} . a) A b) I c) O d) None of these	1
Q18.	Let $f : \mathbb{R} \rightarrow \mathbb{R}$ be given by $f(x) = \tan x$. Then $f^{-1}(1)$ is a) $\frac{\pi}{4}$ b) $\left\{n\pi + \frac{\pi}{4} : n \in \mathbb{Z}\right\}$ c) does not exist d) none of these	1
	Directions : In the question number 19 and 20, a statement of Assertion (A) is followed by a statement Reason (R). Choose the correct option as: a) Both A and R are true and R is the correct explanation of A. b) Both A and R are true but R is not the correct explanation of A. c) A is true but R is false. d) A is false but R is true.	
Q19.	Assertion (A) : The relation P on set X is a transitive relation if it is symmetric. Reason (R) : The relation P has a subset of the form $\{(a, b), (b, c), (a, c)\}$, where $a, b, c \in X$.	1
Q20.	Assertion (A) : The function f is bijective if it is one-one and onto. Reason (R) : $3 \in \mathbb{R}$ (co-domain of f) has no preimage in the domain of f but it is bijective.	1
<u>SECTION – B</u>		
Q21.	If A is a square matrix such that $A^2=A$, then write the value of $7A - (I + A)^3$, where I is an identity matrix.	2
Q22.	Let $A = \mathbb{R} - \{3\}$ and $B = \mathbb{R} - \{1\}$. Consider the function $f : A \rightarrow B$ defined by $f(x) = \frac{(x-2)}{(x-3)}$. Is f one-one and onto? Justify your answer.	2
Q23.	Show that the relation R in the set $\{1, 2, 3\}$ given by $R = \{(1, 2), (2, 1)\}$ is symmetric but neither reflexive nor transitive.	2
Q24.	Show that if A and B are symmetric matrices, then $AB - BA$ is a skew symmetric matrix.	2
Q25.	Prove that $\sin^{-1}\left(\frac{3}{5}\right) - \sin^{-1}\left(\frac{8}{17}\right) = \cos^{-1}\left(\frac{84}{85}\right)$	2

SECTION – C

Q26.	If $\tan^{-1} \frac{(x-1)}{(x-2)} + \tan^{-1} \frac{(x+1)}{(x+2)} = \frac{\pi}{4}$, then find the value of x.	3												
Q27.	The cost of 4 kg onion, 3 kg wheat and 2 kg rice is Rs. 60. The cost of 2 kg onion, 4 kg wheat and 6 kg rice is Rs. 90. The cost of 6 kg onion 2 kg wheat and 3 kg rice is Rs. 70. Find the cost of each item per kg by matrix method.	3												
Q28.	A manufacturer produces three products x, y and z which he sells in two markets. Annual sales are indicated below: <table border="1" style="margin-left: auto; margin-right: auto;"> <thead> <tr> <th>Market</th> <th colspan="3">Products</th> </tr> </thead> <tbody> <tr> <td>I</td> <td>10,000</td> <td>2,000</td> <td>18,000</td> </tr> <tr> <td>II</td> <td>6,000</td> <td>20,000</td> <td>8,000</td> </tr> </tbody> </table> <p>If unit sale prices of x, y and z are Rs. 2.50, Rs. 1.50 and Rs. 1.00 respectively. Find the total revenue in each market with the help of matrix algebra.</p>	Market	Products			I	10,000	2,000	18,000	II	6,000	20,000	8,000	3
Market	Products													
I	10,000	2,000	18,000											
II	6,000	20,000	8,000											
Q29.	Calculate the inverse of the matrix. $A = \begin{bmatrix} 2 & 4 & -6 \\ 7 & 3 & 5 \\ 1 & -2 & 4 \end{bmatrix}$	3												
Q30.	Find x, y and z if $A = \begin{bmatrix} 0 & 2y & z \\ x & y & -z \\ x & -y & z \end{bmatrix}$ <p>Satisfies $A^T = A^{-1}$.</p>	3												
Q31.	Check whether the relation R defined on the set $A = \{1,2,3,4,5,6\}$ as $R = \{(a, b):b=a+1\}$ is reflexive, symmetric or transitive.	3												

SECTION – D

Q32.	Solve : $\tan^{-1} 2x + \tan^{-1} 3x = \frac{\pi}{4}$	5
Q33.	Find $A^2 - 5A$ for the following matrix. $A = \begin{bmatrix} 2 & 0 & 1 \\ 2 & 1 & 3 \\ 1 & -1 & 0 \end{bmatrix}$	5
Q34.	Express the matrix $A = \begin{bmatrix} 2 & 4 & -6 \\ 7 & 3 & 5 \\ 1 & -2 & 4 \end{bmatrix}$ as the sum of a symmetric and skew-symmetric.	5
Q35.	If $A = \{1, 2, 3, \dots, 9\}$ and R is the relation in $A \times A$ defined by $(a, b) R(c, d)$, if $a + d = b + c$ for $(a, b), (c, d)$ in $A \times A$. Prove that R is an equivalence relation.	5

SECTION – E

Q36.	<p><u>Case Study – I</u></p> <p>Riya and Maya are two friends studying in the same class. While doing their mathematics project on Relation and Functions they have to collect the name of five metro cities and four cities other than metro cities of India; and present the name of cities in the form of sets. They have collected the names of cities and write in the form of sets given as follows:</p> <p>$A = \{\text{Five Metro cities of India}\} = \{\text{Delhi, Mumbai, Bangalore, Calcutta, Pune}\}$ $B = \{\text{Bihar, Agra, Jaipur, Ahmedabad}\}$</p> <p>On the basis of information answer the following:</p> <ol style="list-style-type: none">How many functions exist from Set A to Set B?Let $R : A \leftarrow A$ defined by $R = \{(x, y) : \text{Total number of vehicles in Delhi is less than total number of vehicles in Mumbai}\}$. Check whether relation R is Reflexive, Symmetric or Transitive?Riya wants to know how many relations are possible from set A to set B?	4
Q37.	<p><u>Case Study – II</u></p> <p>In a city there are two factories A and B. Each factory produces sports clothes for boys and girls. There are three types of clothes produced in both the factories, type I, II and III. For boys the number of units of types I, II and III respectively are 80, 70 and 65 in factory A and 85, 65 and 72 are in factory B. For girls the number of units of types I, II and III respectively are 80, 75 and 90 in factory A and 50, 55, 80 are in factory B.</p> <p>Based on the above information, answer the following questions.</p> <ol style="list-style-type: none">If P represents the matrix of number of units of each type produced by factory A for both boy and girls, then write the matrix P.Let R be a 3×2 matrix that represent the total production of sports clothes of each type for boys and girls, then find the transpose of R.If Q represents the matrix of number of units of each type produced by factory B for both boys and girls, then write the matrix B?	4

Q38.

Case Study – III

4

The management committee of a residential colony decided to award some of its members (say x) for honesty, some (say y) for helping others and some others (say z) for supervising the workers to kept the colony neat and clean. The sum of all the awardees is 12. Three times the sum of awardees for cooperation and supervision added to two times the number of awardees for honesty is 33. The sum of the number of awardees for honesty and supervision is twice the number of awardees for helping.

Based on the above information, answer the following questions.

- a) Write the linear equations.
- b) Write the given situation in the form $AX = B$ and find $|A|$.
- c) Find the value of x , y and z using adjoint and inverse.

SHARDEIN SCHOOL
UNIT-I EXAMINATION (2025-26)
CLASS – XII
SUBJECT : MARKETING

TIME : 03 HOURS

MM : 60

General Instructions:

- a. Please read the instructions carefully.
- b. This question paper consists of 24 questions in two Sections
- c. Section A and Section B. Section A has Objective Type Questions whereas Section B contains Subjective Type Questions. Out of the given (6 +18) = 24 questions, a candidate has to answer (6+11) = 17 questions in the allotted (maximum) time of 3 hours.
- d. All questions of a particular section must be attempted in the correct order.
- e. Section A: Objective Type Questions (30 marks): This section has 6 questions.
- f. There is no negative marking. Do as per the instructions given.
- g. Marks allotted are mentioned against each question/part.
- h. Section B: Subjective Type Questions (30 marks): This section has 18 questions. A candidate has to do 11 questions. Do as per the instructions given. Marks allotted are mentioned against each question/part.

SECTION – A : OBJECTIVE TYPE QUESTIONS

Q1.	<p>Answer any 4 out of the given 6 questions on Employability Skills:</p> <ol style="list-style-type: none"> 1) _____ is the process of creating a non-fiction text about current or recent news, items of general interest or specific topics. <ol style="list-style-type: none"> a) Speech b) Article writing c) Paragraph writing d) None of the above 2) Which of the following kinds of communication do students spend most time engaged in: <table style="width: 100%; border: none;"> <tr> <td style="width: 50%;">a) Listening</td> <td style="width: 50%;">c) Speaking</td> </tr> <tr> <td>b) Reading</td> <td>d) Writing</td> </tr> </table> 3) Communication is a _____ process in which persons communicate information or messages using language, symbols, signs, or action. <ol style="list-style-type: none"> a) Two-Way process b) Three-Way process c) Four-Way process d) One-Way process 4) _____ are the parts of communication in communication skills. <ol style="list-style-type: none"> a) Speaking b) Listening c) Reading & Writing d) All of the above 	a) Listening	c) Speaking	b) Reading	d) Writing	4
a) Listening	c) Speaking					
b) Reading	d) Writing					

	<p>5) _____ involves a sender, who encodes and sends a message through a channel, and a receiver, who decodes the message and gives feedback.</p> <p>a) Listening b) Communication c) Speaking d) Reading & Writing</p> <p>6) _____ is important in communication as it helps in knowing whether the receiver has understood the message or not.</p> <p>a) Sender b) Receiver c) Feedback d) All of the above</p>	
Q2.	<p>Answer any 5 out of the given 6 questions.</p> <p>1) It provides written information about the product helping the buyer to understand the nature of the product its distinctive features</p> <p>a) Brand b) Logo c) Package d) Label</p> <p>2) The needs of the customer are identified through market research and the insights thus obtained are used to add new features to the product</p> <p>a) Core benefit b) Augmented product c) Differentiated product d) Potential product</p> <p>3) A deliberate alteration in the physical attributes of a product or its packaging is called</p> <p>a) Product Modification b) Product differentiation c) Product Diversification d) Product repositioning</p> <p>4) Which type of pricing policy is suitable where little is known about the price elasticity of the product</p> <p>a) Differential pricing b) Penetration pricing c) Perceived value pricing d) Skimming pricing</p> <p>5) Which of the following is NOT included in product decisions?</p> <p>a) Styling b) Brand name c) Warehousing d) Packaging</p> <p>6) Marketers highlight some of the special attributes/features/qualities their brand is endowed with. This difference could be tangible or psychological. These sentences are related to</p> <p>a) Potential Product b) Augmented Product c) Differentiated Product d) Generic Product</p>	5

Q3.

Answer any 6 out of the given 7 questions.

6

- 1) Which activities are more focused on in-store activations and melas?
 - a) ATL
 - b) BTL
 - c) ALT
 - d) BLT
- 2) If the demand for a product is inelastic firms fix a price of the product which will be?
 - a) High
 - b) Low
 - c) To cover the
 - d) None of these
- 3) The type of promotional technique to be used is dependent on which P' of marketing mix
 - a) Product
 - b) Place
 - c) Price
 - d) Promotion
- 4) Which of the following products is most likely to be purchased through routine decision-making?
 - a) Television set
 - b) Soft-drink
 - c) Shirt
 - d) Car
- 5) For what type of shopping products does price become secondary in case the focus is on style/quality?
 - a) Homogeneous products
 - b) Heterogeneous products
 - c) Consumer products
 - d) Services
- 6) On Wednesdays, Big Bazar used to cut back the price of fruits and vegetables to attract large number of customers, however, no change was made on the price of other products. What are vegetables and fruits called for Wednesday?
 - a) Loss leaders
 - b) Assorted products
 - c) Branded products
 - d) Premium products
- 7) Which of the following is not included in product decisions?
 - a) Styling
 - b) Brand name
 - c) Warehousing
 - d) Packaging

Q4.	<p>Answer any 5 out of the given 6 questions.</p> <ol style="list-style-type: none"> 1) What type of industrial goods are used in producing the finished goods? <ol style="list-style-type: none"> a) Capital items b) Raw material c) Supplies and business services d) Manufactured materials and parts 2. 2) Name the pricing method which tells the firm what prices competitors are charging in the market, but it ignores replacement costs issue. <ol style="list-style-type: none"> a) Mark-up pricing b) Cost plus pricing c) Break-even pricing d) Demand oriented pricing 3) From which stage of PLC can an organisation observe an onset of decline in profits <ol style="list-style-type: none"> a) Introduction stage b) Growth stage c) Maturity stage d) Decline stage 4) Which of the following is an external factor that affects pricing decisions? <ol style="list-style-type: none"> a) Product Differentiation b) Cost of Production c) Objectives of the firm d) Competition 5) Packaging may be _____ which refers to the product immediate container. 6) Availability of quality goods at competitive prices _____ social welfare of society. <ol style="list-style-type: none"> a) Neutralize b) Minimize c) Maximize d) No impact 	5
Q5.	<p>Answer any 5 out of the given 6 questions.</p> <ol style="list-style-type: none"> 1) Odd pricing such as Rs. 99, Rs. 149 and Rs. 990 which makes the customer falsely believe that they are paying a lesser amount are examples of which type of pricing technique. 2) If fixed expensive in a production unit are Rs. 1,08,000 variable cost per unit is Rs. 30 and selling price per unit is Rs. 40. Find out the BEP quantity. 3) Define price? 4) Define product? 5) Candles, and umbrellas are the examples of <ol style="list-style-type: none"> a) A staple good. b) Impulse goods. c) Emergency goods. d) Shopping goods 6) Jewellery is example of this type of goods. 	5

Q6.	<p>Answer any 5 out of the given 6 questions.</p> <p>1) Which of these come under the category of transactional function?</p> <p>a) Buying selling and risk bearing b) Assembling goods c) Storage and grading d) Maintenance</p> <p>2) Which is the term for purchase made to fulfil urgent needs often resulting in consumers, paying more?</p> <p>3) Jewellery and car fall under which type of products?</p> <p>4) At the last moment, by paying cash at the billing counter, you bought a pack of cloth clip. This is an example of which type of goods?</p> <p>5) What price will be fixed for a product having more features and attributes?</p> <p>a) higher b) lower c) moderate d) profit maximisation</p> <p>6) Define augmented goods?</p>	5
-----	---	---

SECTION – B : SUBJECTIVE TYPE QUESTIONS

Answer any 3 out of the given 5 questions on Employability Skills

Q7.	What is verbal communication? Give examples	2
Q8.	What is non-verbal communication?	2
Q9.	State two advantages of written communication.	2
Q10.	Explain any four principles of effective communication.	2
Q11.	Explain the role of eye contact in active listening.	2

Answer any 3 out of the given 5 questions in 20-30 words each.

Q12.	How does pricing help in improving companies image?	2
Q13.	Explain leader pricing	2
Q14.	Discuss any two components of a product?	2
Q15.	Write any two objective of pricing?	2
Q16.	Define branding?	2

Answer any 2 out of the given 3 questions in 30-50 words each.

Q17.	You launch a product. It is a growth stage, which marketing strategy will be adopted by you during the stage? Describe.	3
Q18.	List the condition, favourite skimming, pricing policy, and penetration pricing policy.	3
Q19.	Explain the importance of pricing to customer?	3

Answer any 3 out of the given 5 questions in 50-80 words each.

Q20.	Explain all the stages of PLC with graph?	4
Q21.	Explain the marketing strategy used for convenience, goods?	4
Q22.	Explain the packaging concept state various packaging concept decision with types of packaging.	4
Q23.	Explain various aspects of production considered for setting price?	4
Q24.	Explain any four types of value based pricing method?	4